



## POST MATCH SUMMARY REPORT

**New Zealand 0 - 4 Zambia**

Group F - Match 36

25 October 2025

20:00 Kick Off

Football Academy Mohammed VI (Pitch 2)



# Match Summary - Teams



New Zealand

0 — 4



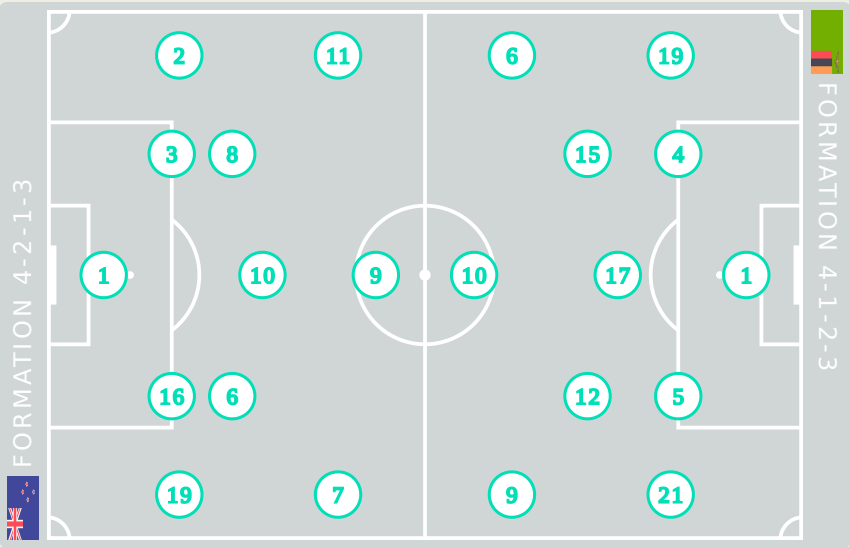
Zambia

STARTING

- 1 GK Harriet MULLER 80'
- 2 DF Charley MARCH
- 3 DF Holly ROBINS
- 6 MF Mikaela BANGALAN
- 7 FW Grace DUNCAN 53'
- 8 MF Piper ONEILL 75'
- 9 FW Katie PUGH 53'
- 10 MF Pia VLOK
- 11 FW Laura BENNETT 65'
- 16 DF Lane RIRINUI
- 19 DF Heidi DRAAI 53'

SUBSTITUTES

- 18 GK Emma MEADOWS
- 21 GK Nienke LEMMENS
- 4 DF Freya DES FOUNTAIN
- 5 DF Taylah BYERS
- 12 MF Natalie YOUNG 75'
- 13 FW Taylor VUJNOVICH 53'
- 14 MF Sienna CANDY 53'
- 15 FW Keira TICHBON
- 17 FW Kya SOLOMON 65'
- 20 MF Ariana VOSPER 53'



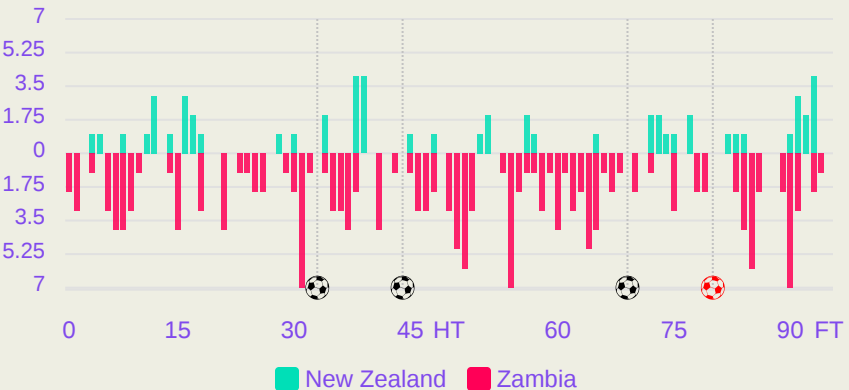
STARTING

- Mary NYANGU GK 1
- Nana MALANDA MF 4
- Precious MWAPE DF 5
- Grace PHIRI FW 6
- 44' Mercy CHIPASULA FW 9
- 33' Victoria MBALI MF 10
- 83' Natasha NKAKA DF 12
- 65' Sharon SIAKALOA MF 15
- Taonga MUBANGA MF 17
- Lweendo HANONGO DF 19
- Faith KAUNDA DF 21

SUBSTITUTES

- Descent MBEWE GK 16
- Gift MAZIMBA DF 2
- Hellen SICHAMBA FW 3
- 83' KAJIYA MF 7
- Beatrice NJOBVU DF 8
- 69' Masela SEKESEKE FW 11
- Taonga TEMBO MF 13
- Natasha KASEMA MF 14
- Esther NGABWE DF 20

Distribution in the Final Third





Match Summary - Key Statistics



New Zealand



Zambia



Possession					
Total	<div><div>30.7%</div><div>22%</div><div>47.3%</div></div>		Total		
0	Goals				4
3 (1)	Attempts at Goal (On Target)				33 (11)
290 (163)	Total Passes (Complete)				318 (222)
56 %	Pass Completion %				70 %
69	Completed Line Breaks				84
6	Defensive Line Breaks				6
39	Receptions in the Final Third				165
8	Crosses				30
31	Ball Progressions				41
207 (79)	Defensive Pressures Applied (Direct Pressures)				164 (64)
57	Forced Turnovers				67
102	Second Balls				121
104.2 km	Total Distance Covered				99.4 km
4.3 km	Zone 4 - Low Speed Sprinting: 19-23 km/h				4.6 km





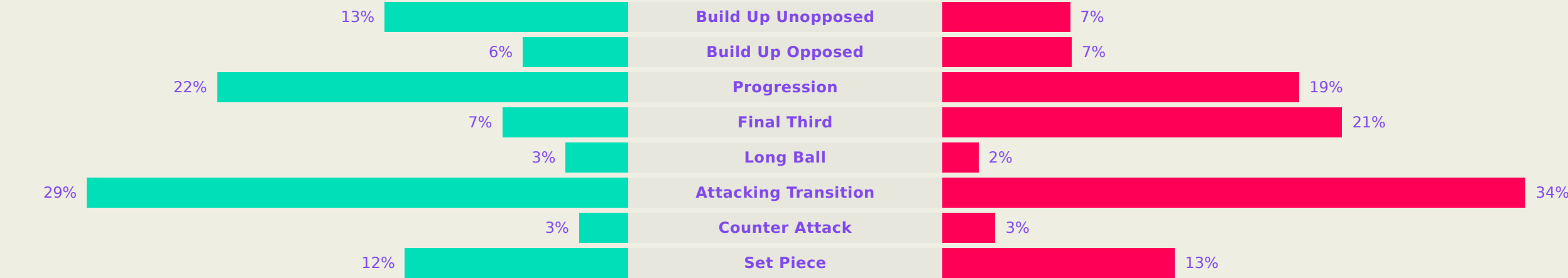
New Zealand

Phases of Play

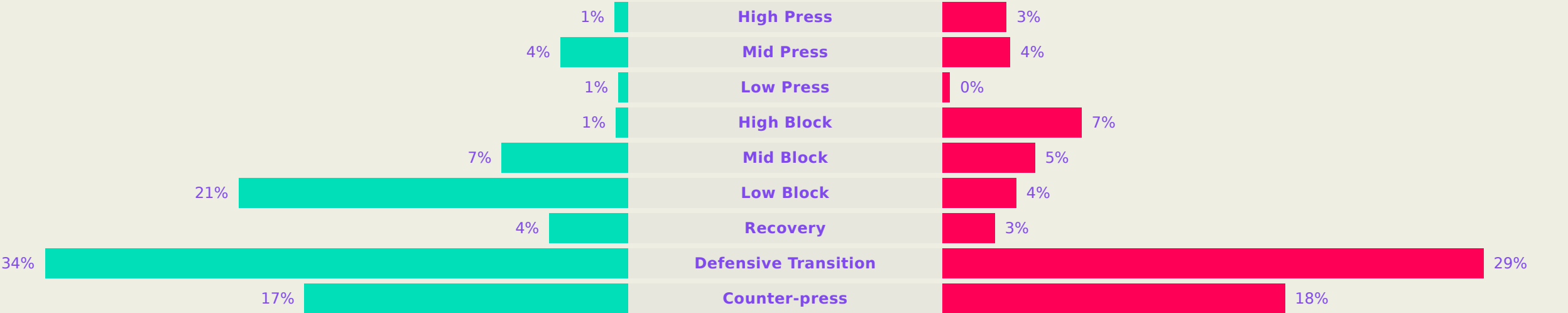
Zambia



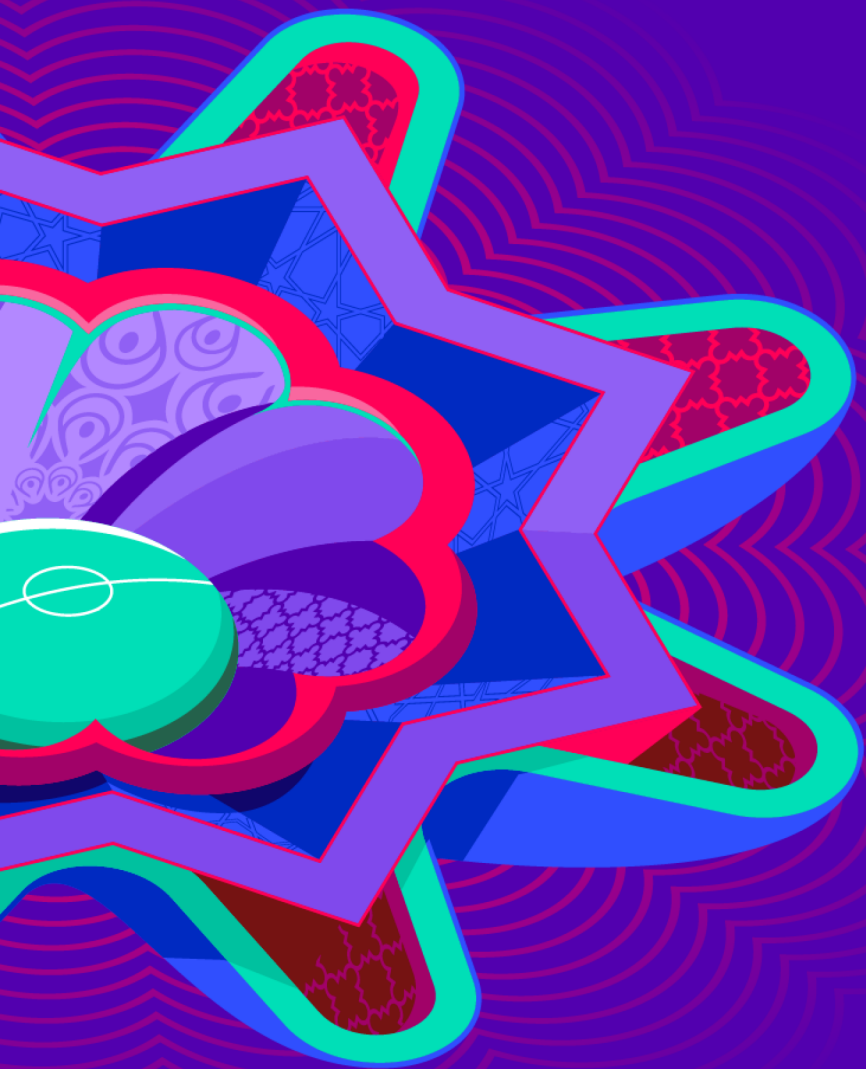
IN POSSESSION



OUT OF POSSESSION





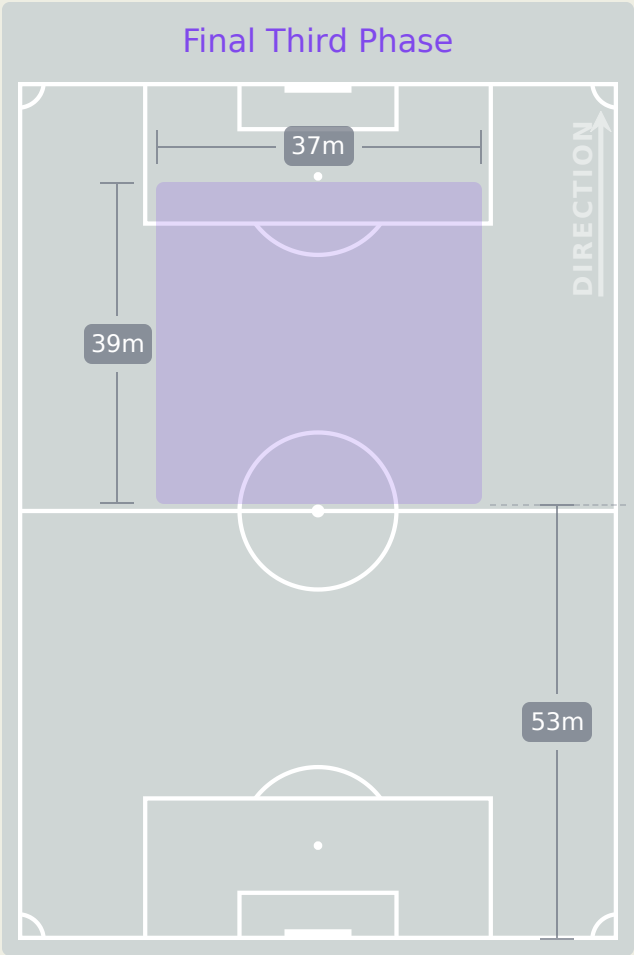
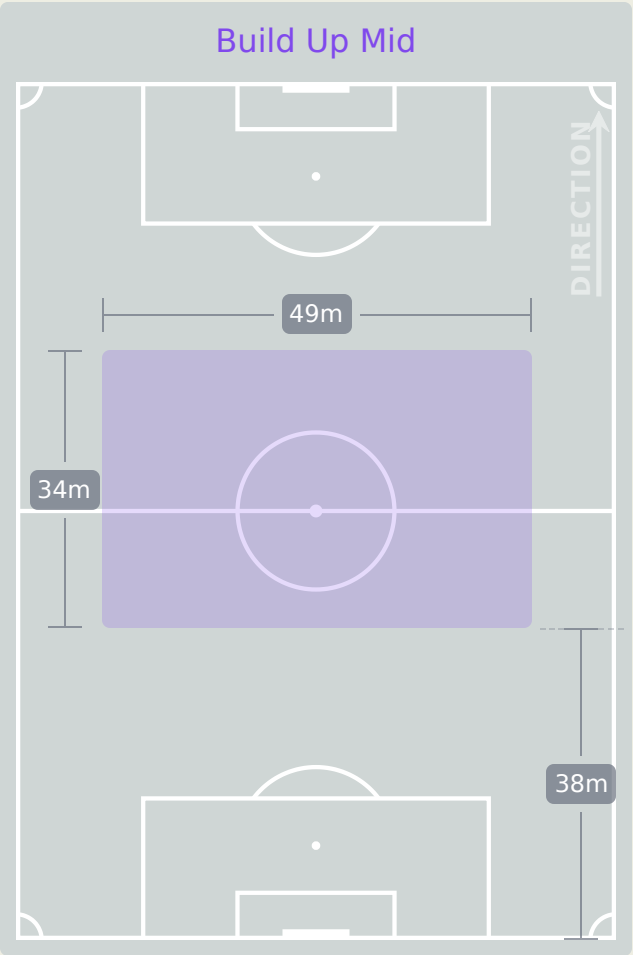
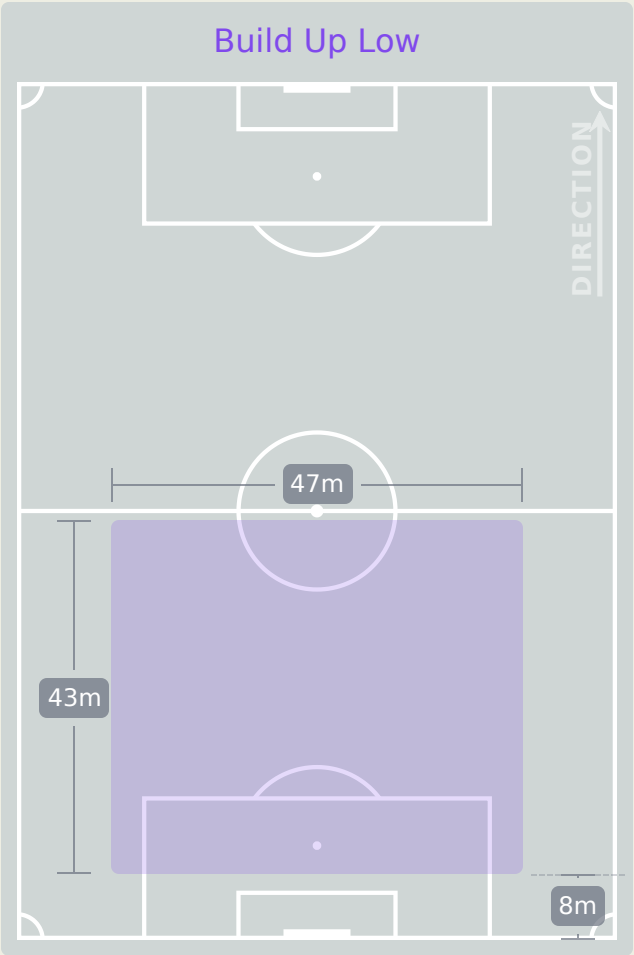


# IN POSSESSION

New Zealand 0 - 4 Zambia



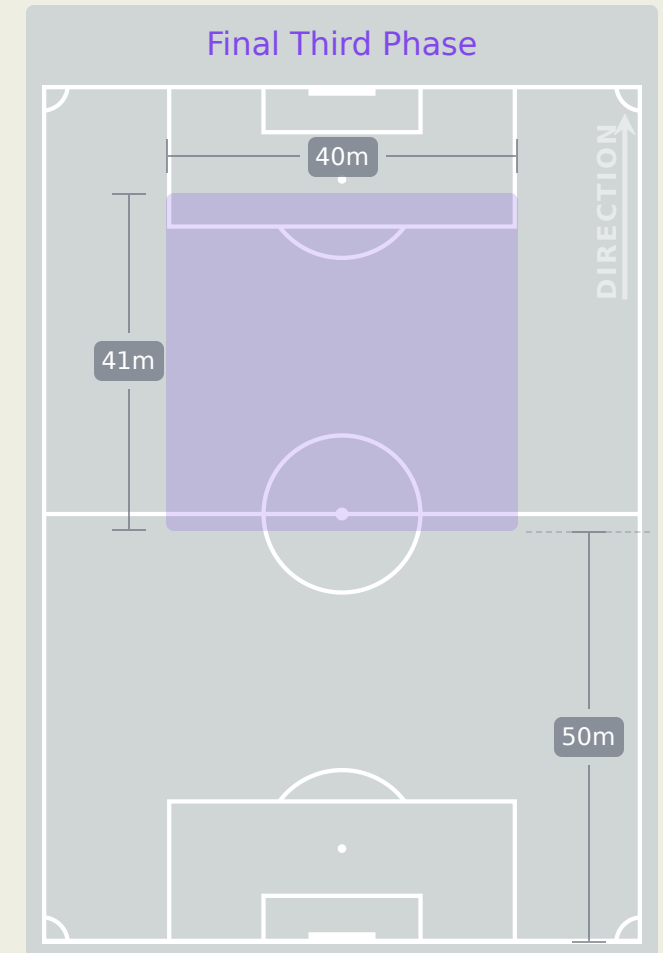
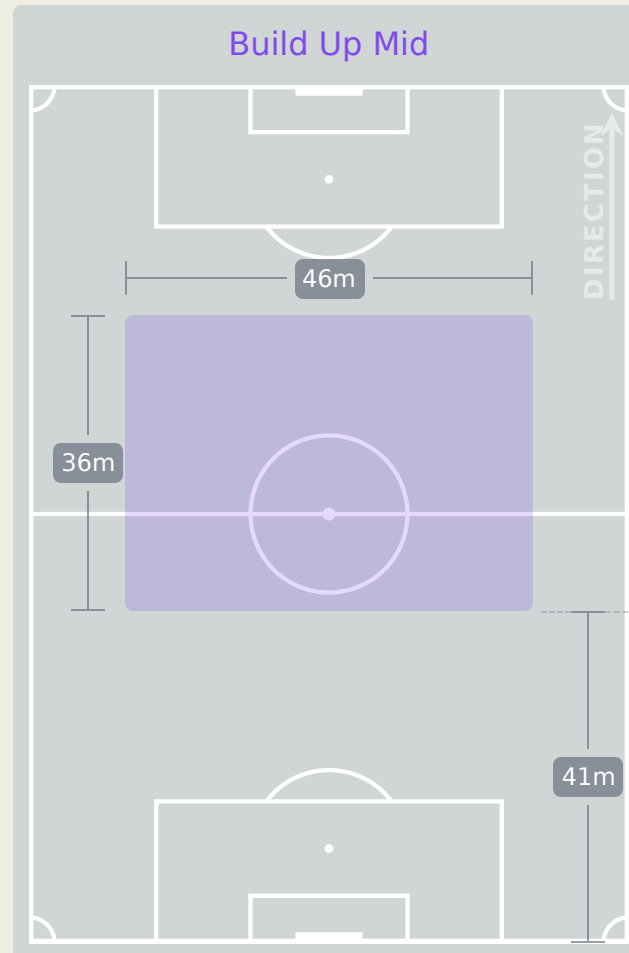
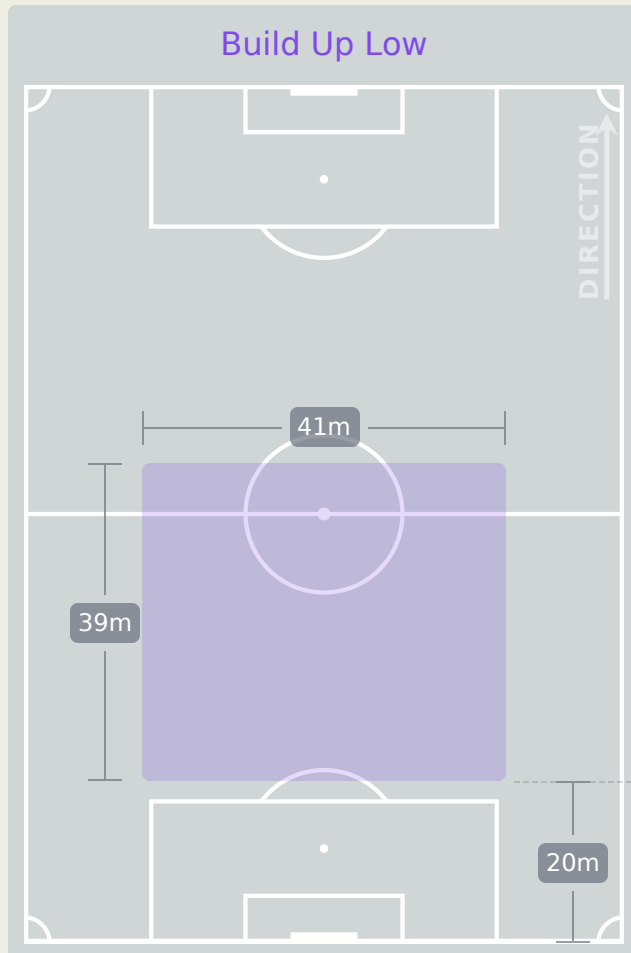
# In Possession Line Height & Team Length





# In Possession Line Height & Team Length

**Zambia**





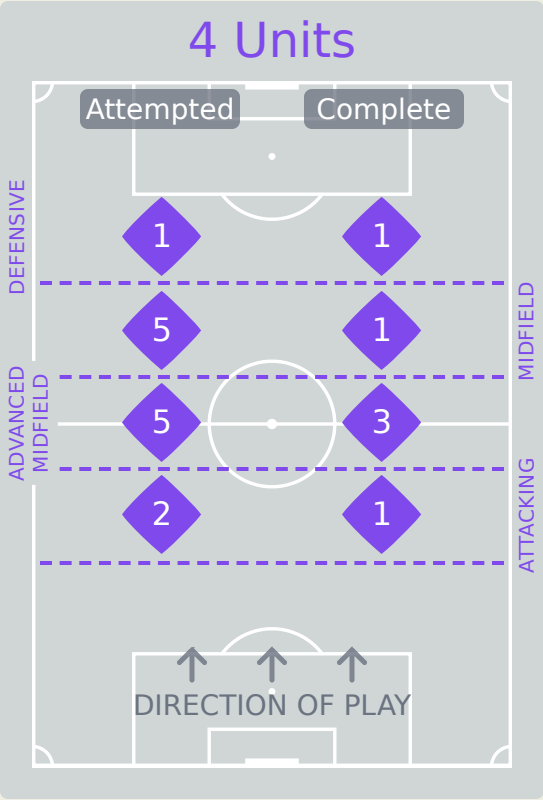
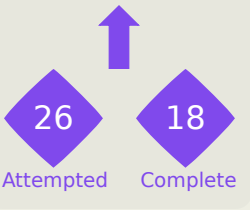
Line Breaks



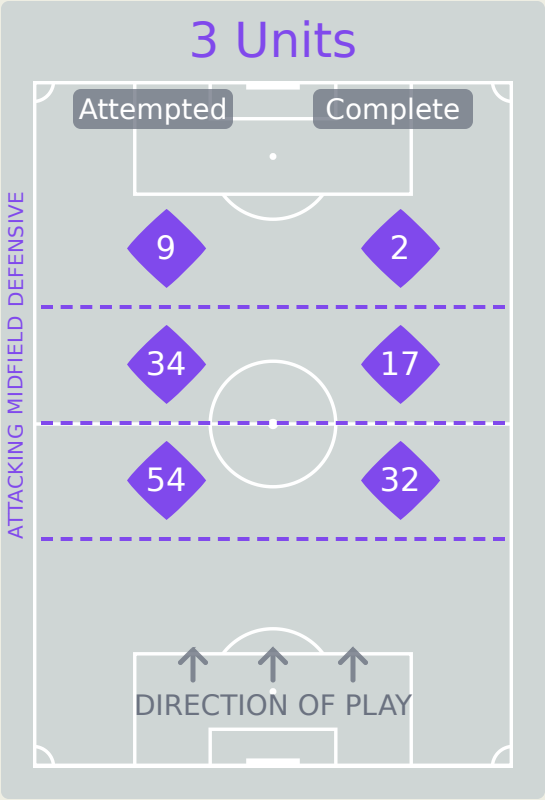
New Zealand

Attempted Line Breaks

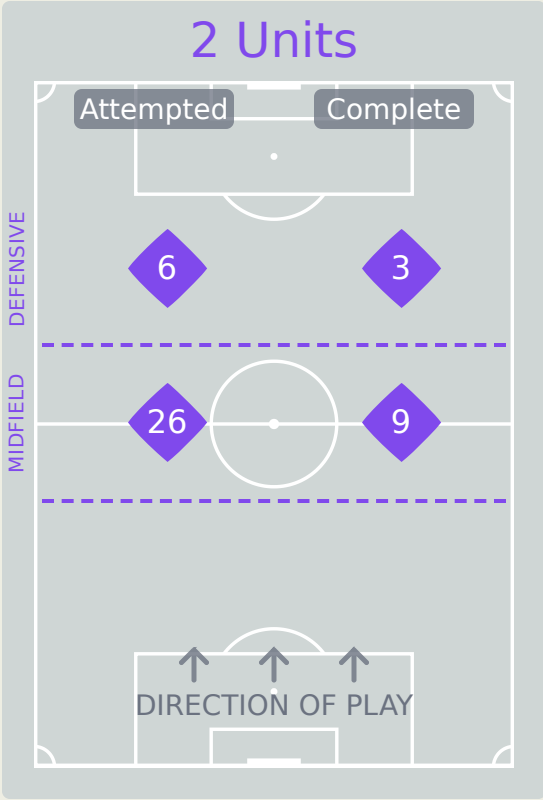
142



Attempted Line Breaks	13
Inside Shape	8
Outside Shape	5



Attempted Line Breaks	97
Inside Shape	68
Outside Shape	29



Attempted Line Breaks	32
Inside Shape	24
Outside Shape	8



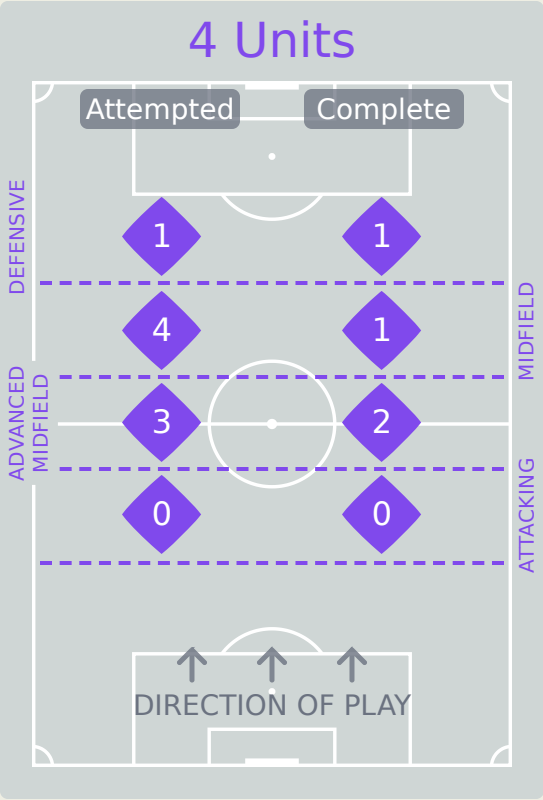
# Line Breaks



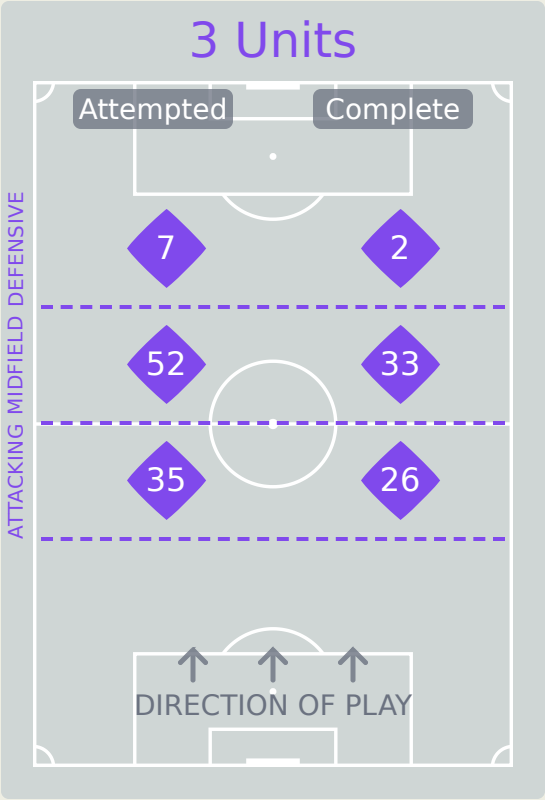
Zambia

Attempted Line Breaks

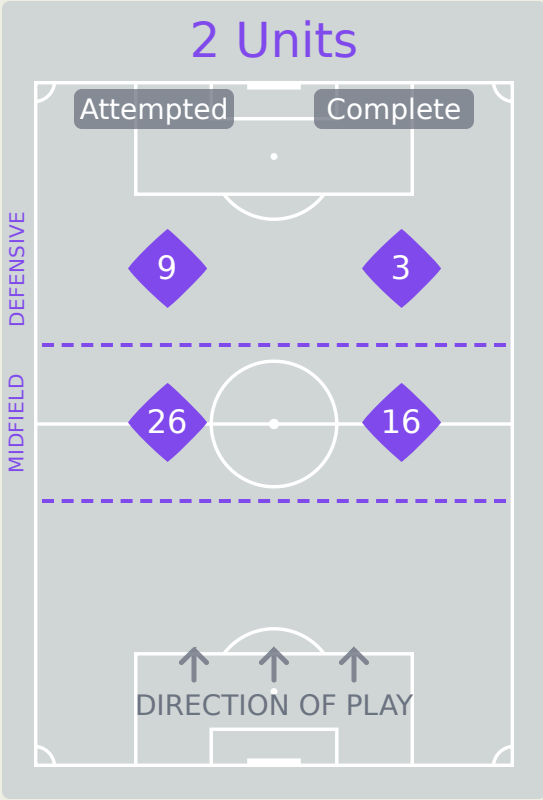
137



Attempted Line Breaks	8
Inside Shape	6
Outside Shape	2



Attempted Line Breaks	94
Inside Shape	65
Outside Shape	29



Attempted Line Breaks	35
Inside Shape	25
Outside Shape	10



Line Breaks



					4 Units				3 Units			2 Units		Direction			Distribution Type		
#	Player	Line Breaks Attempted	Line Breaks Completed	Line Break Completion %	Attacking Line	Attacking Midfield Line	Midfield Line	Defensive Line	Attacking Line	Midfield Line	Defensive Line	Midfield Line	Defensive Line	Through	Around	Over	Pass	Cross	Ball Progression
1	Harriet MULLER	20	8	40%	0	0	1	0	11	4	0	4	0	0	1	19	20	0	0
2	Charley MARCH	25	10	40%	0	1	1	0	10	4	1	7	1	1	8	16	24	0	1
3	Holly ROBINS	6	4	67%	0	1	0	0	4	1	0	0	0	5	0	1	6	0	0
6	Mikaela BANGALAN	7	3	43%	0	0	0	0	2	3	1	1	0	0	2	5	6	0	1
7	Grace DUNCAN	5	1	20%	0	1	0	0	0	2	0	2	0	0	1	4	5	0	0
8	Piper ONEILL	9	4	44%	1	0	0	0	4	2	0	1	1	2	3	4	9	0	0
9	Katie PUGH	2	1	50%	0	0	0	0	0	0	2	0	0	1	0	1	2	0	0
10	Pia VLOK	7	3	43%	0	0	0	1	2	2	0	2	0	3	2	2	5	1	1
11	Laura BENNETT	7	3	43%	0	0	0	0	0	3	1	3	0	4	1	2	7	0	0
16	Lane RIRINUI	11	6	55%	1	0	1	0	8	1	0	0	0	2	4	5	11	0	0
19	Heidi DRAAI	11	6	55%	0	0	0	0	6	0	1	2	2	0	3	8	11	0	0
12	Natalie YOUNG	3	2	67%	0	0	0	0	1	2	0	0	0	1	1	1	3	0	0
13	Taylor VUJNOVICH	1	1	100%	0	0	0	0	0	1	0	0	0	1	0	0	1	0	0
14	Sienna CANDY	10	9	90%	0	0	2	0	0	6	1	1	0	5	4	1	7	0	3
17	Kya SOLOMON	3	2	67%	0	1	0	0	1	0	0	0	1	0	3	0	2	0	1
20	Ariana VOSPER	15	6	40%	0	1	0	0	5	3	2	3	1	1	4	10	15	0	0



Line Breaks



					4 Units				3 Units			2 Units		Direction			Distribution Type		
#	Player	Line Breaks Attempted	Line Breaks Completed	Line Break Completion %	Attacking Line	Attacking Midfield Line	Midfield Line	Defensive Line	Attacking Line	Midfield Line	Defensive Line	Midfield Line	Defensive Line	Through	Around	Over	Pass	Cross	Ball Progression
1	Mary NYANGU	1	1	100%	0	0	0	0	0	0	0	1	0	0	0	1	1	0	0
4	Nana MALANDA	14	7	50%	0	1	1	0	3	5	0	4	0	2	2	10	14	0	0
5	Precious MWAPE	11	6	55%	0	0	0	0	5	6	0	0	0	1	1	9	11	0	0
6	Grace PHIRI	1	1	100%	0	0	0	0	0	1	0	0	0	1	0	0	1	0	0
9	Mercy CHIPASULA	14	7	50%	0	0	0	0	1	6	2	3	2	3	0	11	13	1	0
10	Victoria MBALI	5	4	80%	0	0	0	0	0	2	2	0	1	4	0	1	5	0	0
12	Natasha NKAKA	16	10	62%	0	0	1	1	1	7	0	3	3	4	6	6	12	0	4
15	Sharon SIAKALOBA	8	6	75%	0	1	1	0	1	2	0	2	1	3	2	3	7	1	0
17	Taonga MUBANGA	13	9	69%	0	0	0	0	3	6	1	3	0	3	3	7	12	0	1
19	Lweendo HANONGO	22	14	64%	0	1	0	0	14	2	0	4	1	3	5	14	20	0	2
21	Faith KAUNDA	28	16	57%	0	0	0	0	7	12	2	6	1	1	9	18	22	4	2
7	KAJIYA	2	2	100%	0	0	0	0	0	2	0	0	0	0	1	1	2	0	0
11	Masela SEKESEKE	2	1	50%	0	0	1	0	0	1	0	0	0	1	1	0	2	0	0



Passing Networks



#	Passes From ↓ to →	Harriet MULLER	Charley MARCH	Holly ROBINS	Mikaela BANGALAN	Grace DUNCAN	Piper ONEILL	Katie PUGH	Pia VLOK	Laura BENNETT	Lane RIRINUI	Heidi DRAAI	Natalie YOUNG	Taylor VUJNOVICH	Sienna CANDY	Kya SOLOMON	Ariana VOSPER
1	Harriet MULLER		4	4	0	0	1	0	0	2	5	0	0	0	0	1	1
2	Charley MARCH	0		1	2	0	1	0	1	5	0	0	0	0	1	3	0
3	Holly ROBINS	1	6		2	0	0	0	1	0	1	1	1	0	1	0	1
6	Mikaela BANGALAN	0	1	2		0	0	1	1	1	1	0	0	1	0	0	1
7	Grace DUNCAN	0	0	0	0		1	1	1	0	0	0	0	0	0	0	0
8	Piper ONEILL	0	3	0	0	1		1	1	2	0	0	0	0	0	2	1
9	Katie PUGH	0	0	0	0	1	0		3	0	0	1	0	0	0	0	0
10	Pia VLOK	0	0	0	0	2	0	0		1	1	1	0	0	2	0	0
11	Laura BENNETT	0	1	0	0	0	0	3	0		0	0	0	0	0	0	0
16	Lane RIRINUI	0	0	1	1	2	1	0	0	0		2	1	0	1	0	3
19	Heidi DRAAI	0	1	0	0	2	3	0	0	0	1		0	0	0	0	0
12	Natalie YOUNG	0	0	0	0	0	0	0	0	0	1	0		2	1	0	1
13	Taylor VUJNOVICH	0	0	0	1	0	0	0	1	0	0	0	1		2	0	2
14	Sienna CANDY	0	3	0	1	0	0	0	1	0	1	0	2	5		2	3
17	Kya SOLOMON	0	1	0	2	0	0	0	0	0	0	0	0	0	2		0
20	Ariana VOSPER	0	0	0	0	0	1	0	0	0	0	0	0	0	3	0	

Top 5 Player to Player Passers		
Player	Passed To	% of Total Team Passes
Holly ROBINS	Charley MARCH	4.2%
Harriet MULLER	Lane RIRINUI	3.5%
Charley MARCH	Laura BENNETT	3.5%
Sienna CANDY	Taylor VUJNOVICH	3.5%

Harriet MULLER	Charley MARCH	2.8%
----------------	---------------	------



Passing Networks

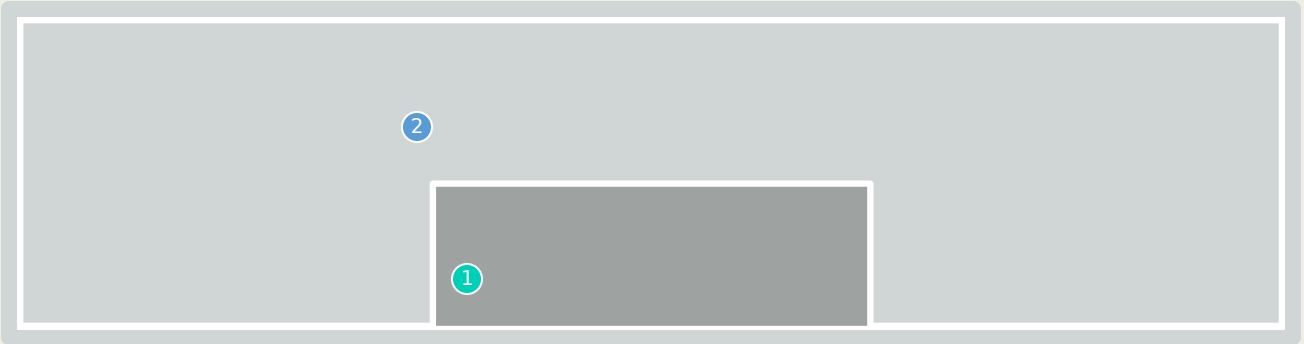
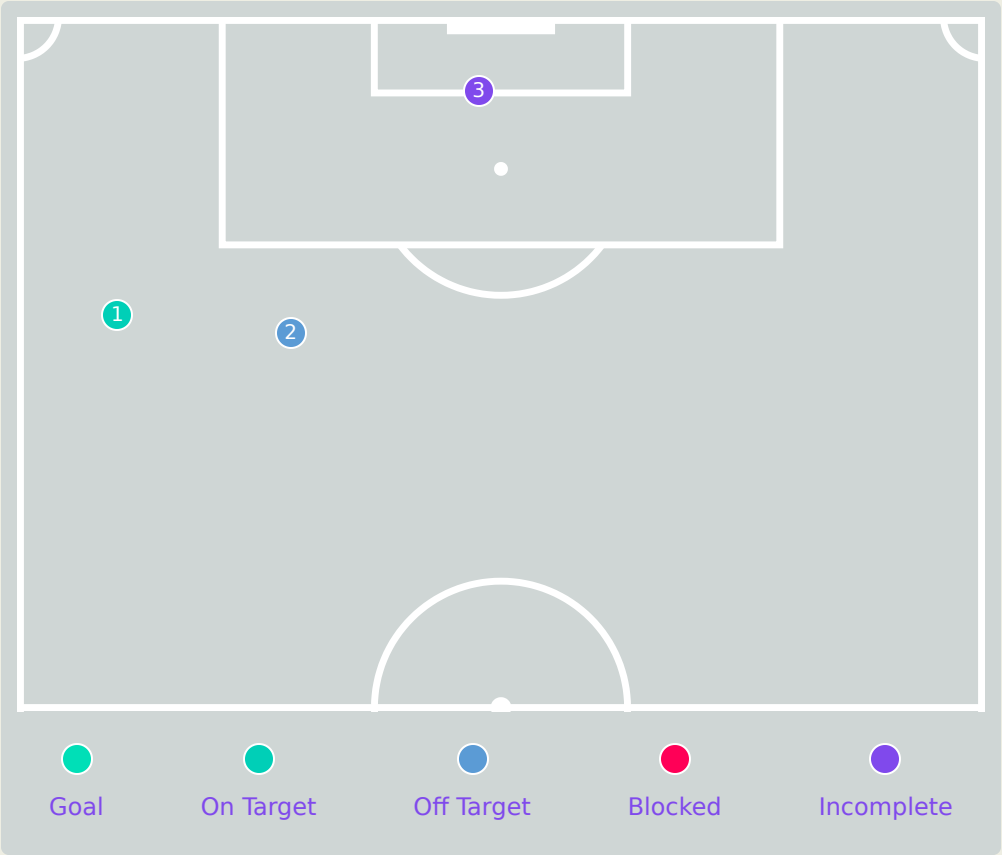







#	Passes From ↓ to →	Mary NYANGU	Nana MALANDA	Precious MWAPE	Grace PHIRI	Mercy CHIPASULA	Victoria MBALI	Natasha NKAKA	Sharon SIKALOKA	Taonga MUBANGA	Lweendo HANONGO	Faith KAUNDA	KAJIYA	Masela SEKESEKE
1	Mary NYANGU		3	2	1	0	0	0	0	0	0	0	0	0
4	Nana MALANDA	0		3	2	2	1	0	0	0	3	1	1	0
5	Precious MWAPE	0	3		2	0	2	0	0	0	0	3	1	0
6	Grace PHIRI	0	0	0		4	5	3	0	1	0	2	1	0
9	Mercy CHIPASULA	0	1	1	4		2	2	2	3	2	5	0	0
10	Victoria MBALI	0	0	0	2	5		8	1	1	2	2	1	4
12	Natasha NKAKA	0	0	0	4	2	3		2	1	1	4	0	1
15	Sharon SIKALOKA	0	0	1	1	3	1	3		1	6	2	0	0
17	Taonga MUBANGA	0	1	0	0	1	3	5	4		6	2	0	0
19	Lweendo HANONGO	0	3	0	1	3	0	0	2	4		0	0	0
21	Faith KAUNDA	0	0	1	2	5	2	2	0	1	0		3	0
7	KAJIYA	0	0	0	2	2	0	0	0	0	0	2		1
11	Masela SEKESEKE	0	0	1	1	1	2	0	0	0	0	0	0	

Top 5 Player to Player Passers		
Player	Passed To	% of Total Team Passes
Victoria MBALI	Natasha NKAKA	4.1%
Sharon SIKALOKA	Lweendo HANONGO	3.1%
Taonga MUBANGA	Lweendo HANONGO	3.1%
Grace PHIRI	Victoria MBALI	2.6%
Mercy CHIPASULA	Faith KAUNDA	2.6%



# Attempts at Goal



Key	Outcome	Shots
	Goals	0
	On Target	1
	Off Target	1
	Blocked	0
	Incomplete	1



# Attempts at Goal

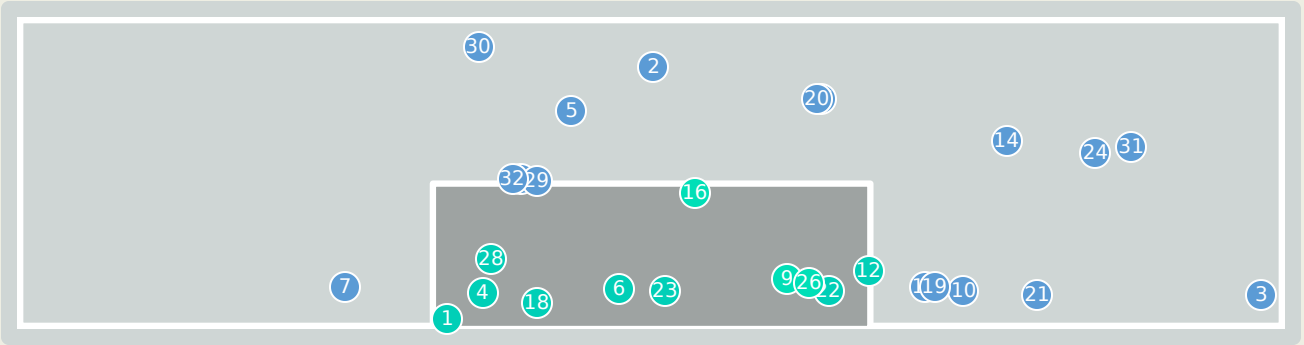
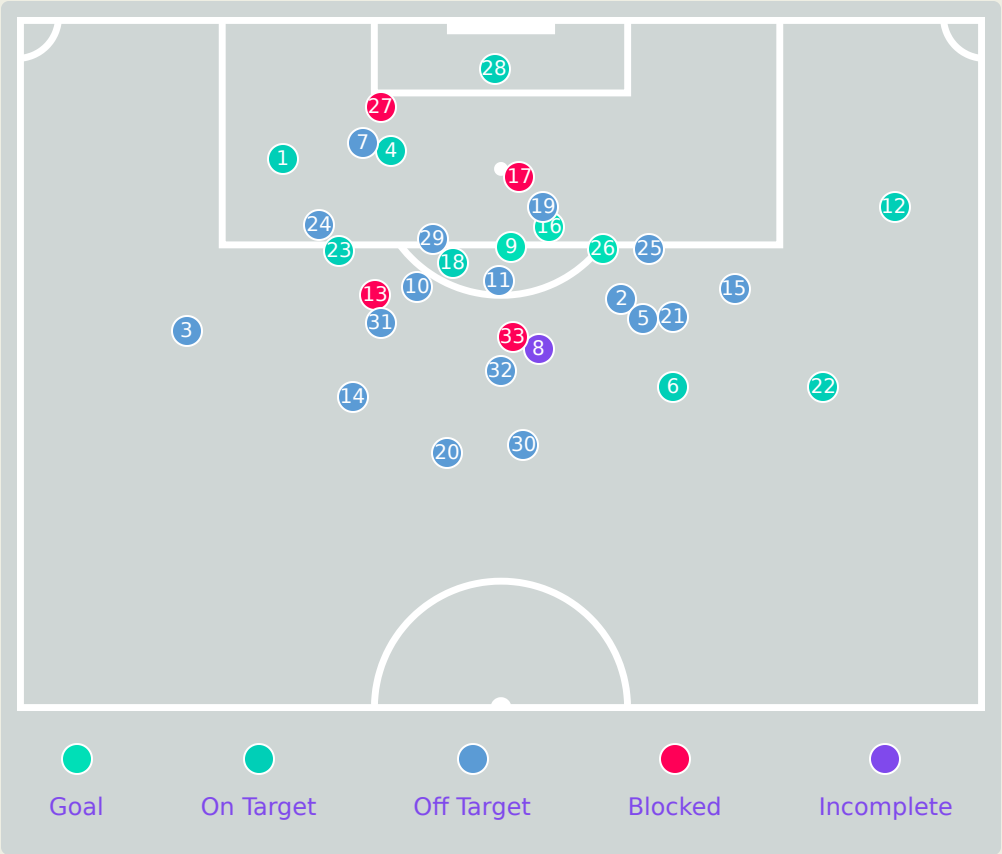
New Zealand



Time	Player	Outcome	Body Part	Delivery Type
8	9 Katie PUGH	On Target	Right Foot	Pass
11	10 Pia VLOK	Off Target	Right Foot	Pass
28	3 Holly ROBINS	Incomplete	Head	Cross



# Attempts at Goal



Key	Outcome	Shots
●	Goals	3
●	On Target	8
●	Off Target	17
●	Blocked	4
●	Incomplete	1



# Attempts at Goal



Time	Player	Outcome	Body Part	Delivery Type
0	6 Grace PHIRI	On Target - Saved	Left Foot	Pass
6	12 Natasha NKAKA	Off Target	Left Foot	Pass
10	9 Mercy CHIPASULA	Off Target	Right Foot	Other
21	9 Mercy CHIPASULA	On Target - Saved	Left Foot	Pass
22	9 Mercy CHIPASULA	Off Target	Right Foot	Freekick
23	15 Sharon SIAKALOBA	On Target - Saved	Right Foot	Loose Ball
29	9 Mercy CHIPASULA	Deflected Off Target - Defensive Event	Left Foot	Cross
32	9 Mercy CHIPASULA	Incomplete - Player On Ball Error	Left Foot	Pass
32	10 Victoria MBALI	On Target - Goal	Right Foot	Ball Progression
36	9 Mercy CHIPASULA	Off Target	Right Foot	Pass
37	10 Victoria MBALI	Off Target - Saved	Right Foot	Pass
38	12 Natasha NKAKA	On Target - Saved	Left Foot	Pass
41	9 Mercy CHIPASULA	Incomplete - Blocked	Left Foot	Pass
41	9 Mercy CHIPASULA	Off Target	Right Foot	Loose Ball
43	9 Mercy CHIPASULA	Off Target	Right Foot	Interception
43	9 Mercy CHIPASULA	On Target - Goal	Right Foot	Pass
46	6 Grace PHIRI	Incomplete - Blocked	Right Foot	Pass



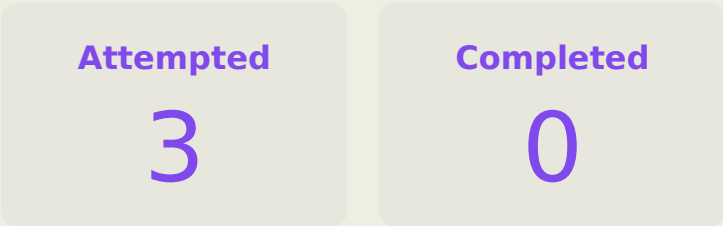
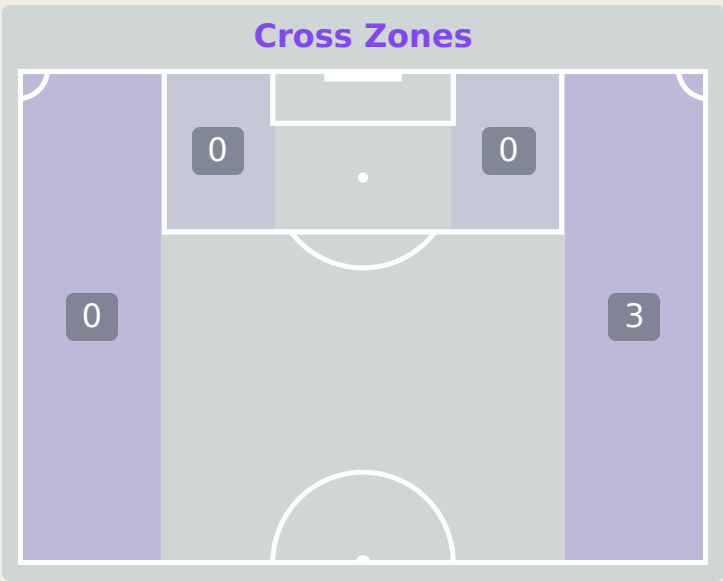
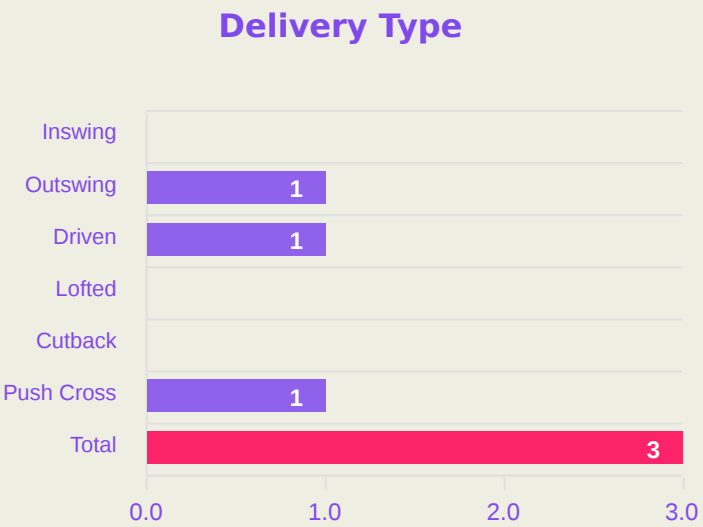
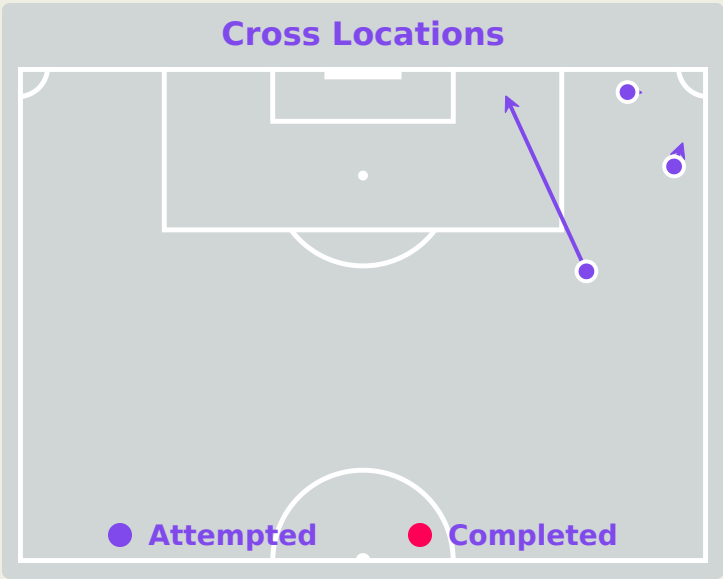
Attempts at Goal



Time	Player	Outcome	Body Part	Delivery Type
46	9 Mercy CHIPASULA	On Target - Saved	Left Foot	Other
46	10 Victoria MBALI	Off Target	Right Foot	Loose Ball
49	17 Taonga MUBANGA	Off Target	Right Foot	Pass
50	9 Mercy CHIPASULA	Off Target - Saved	Right Foot	Ball Progression
53	19 Lweendo HANONGO	On Target - Saved	Right Foot	Interception
54	12 Natasha NKAKA	Deflected On Target - Defensive Event	Right Foot	Loose Ball
62	10 Victoria MBALI	Off Target	Right Foot	Pass
64	10 Victoria MBALI	Off Target	Right Foot	Pass
68	11 Masela SEKESEKE	On Target - Goal	Right Foot	Pass
78	6 Grace PHIRI	Incomplete - Blocked	Left Foot	Pass
79	19 Lweendo HANONGO	On Target - Goal Prevented	Head	Corner
79	6 Grace PHIRI	Off Target	Right Foot	Pass
86	9 Mercy CHIPASULA	Off Target	Right Foot	Pass
89	5 Precious MWAPE	Off Target	Right Foot	Pass
91	9 Mercy CHIPASULA	Off Target	Right Foot	Pass
91	9 Mercy CHIPASULA	Incomplete - Blocked	Right Foot	Loose Ball



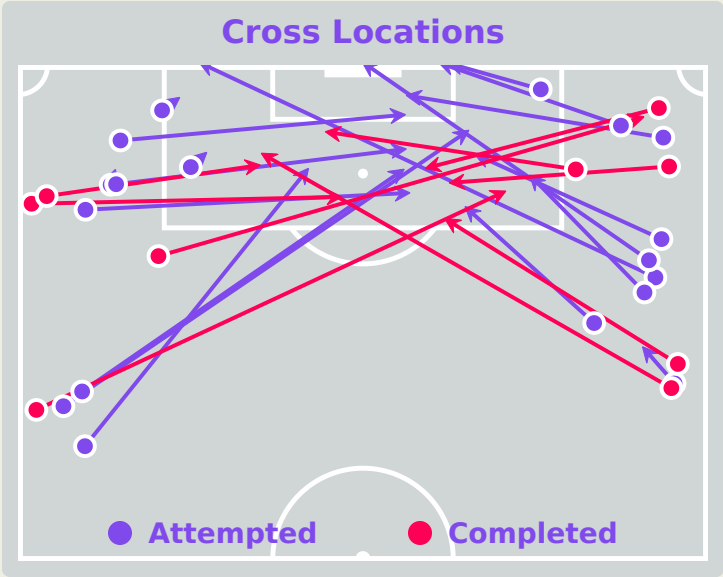
Crosses (Open Play)



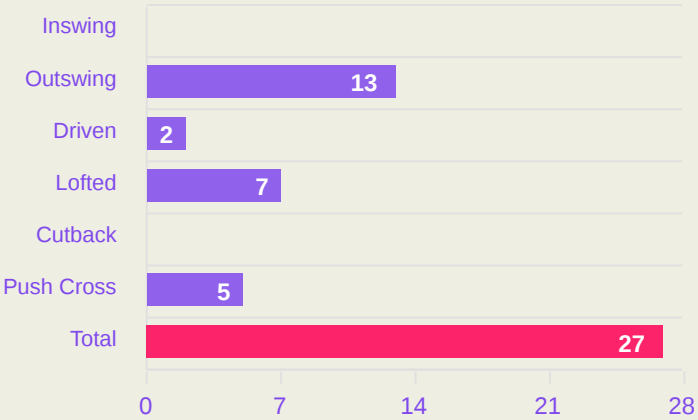
#	Player	Inswing	Outswing	Driven	Lofted	Cutback	Push Cross	Total Attempted
1	Harriet MULLER	0	0	0	0	0	0	0
2	Charley MARCH	0	0	0	0	0	0	0
3	Holly ROBINS	0	0	0	0	0	0	0
6	Mikaela BANGALAN	0	0	0	0	0	0	0
7	Grace DUNCAN	0	0	0	0	0	0	0
8	Piper ONEILL	0	0	0	0	0	0	0
9	Katie PUGH	0	0	0	0	0	0	0
10	Pia VLOK	0	1	1	0	0	0	2
11	Laura BENNETT	0	0	0	0	0	0	0
16	Lane RIRINUI	0	0	0	0	0	0	0
19	Heidi DRAAI	0	0	0	0	0	0	0
12	Natalie YOUNG	0	0	0	0	0	0	0
13	Taylor VUJNOVICH	0	0	0	0	0	1	1
14	Sienna CANDY	0	0	0	0	0	0	0
17	Kya SOLOMON	0	0	0	0	0	0	0
20	Ariana VOSPER	0	0	0	0	0	0	0



Crosses (Open Play)



Delivery Type



Attempted

27

Completed

9

Most Crosses Attempted

8

Natasha NKAKA  
LEFT CENTRE MIDFIELD

#	Player	Inswing	Outswing	Driven	Lofted	Cutback	Push Cross	Total Attempted
1	Mary NYANGU	0	0	0	0	0	0	0
4	Nana MALANDA	0	0	0	0	0	0	0
5	Precious MWAPE	0	0	0	0	0	0	0
6	Grace PHIRI	0	0	0	0	0	0	0
9	Mercy CHIPASULA	0	3	1	0	0	1	5
10	Victoria MBALI	0	0	0	0	0	0	0
12	Natasha NKAKA	0	1	1	2	0	4	8
15	Sharon SIAKALOBA	0	1	0	0	0	0	1
17	Taonga MUBANGA	0	0	0	0	0	0	0
19	Lweendo HANONGO	0	3	0	2	0	0	5
21	Faith KAUNDA	0	5	0	2	0	0	7
7	KAJIYA	0	0	0	0	0	0	0
11	Masela SEKESEKE	0	0	0	1	0	0	1



# Offering to Receive

177

Total Offers Made

44

Total Offers Received

Most Offers

38

Sienna CANDY

BENCH

78

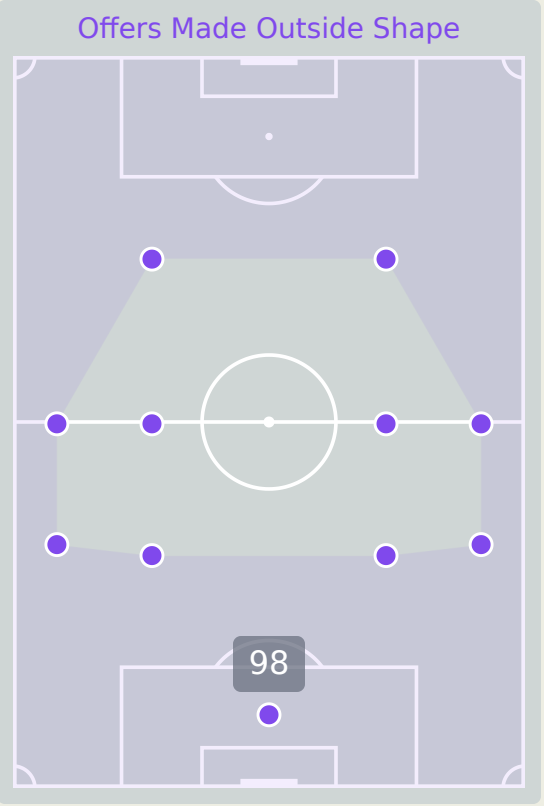
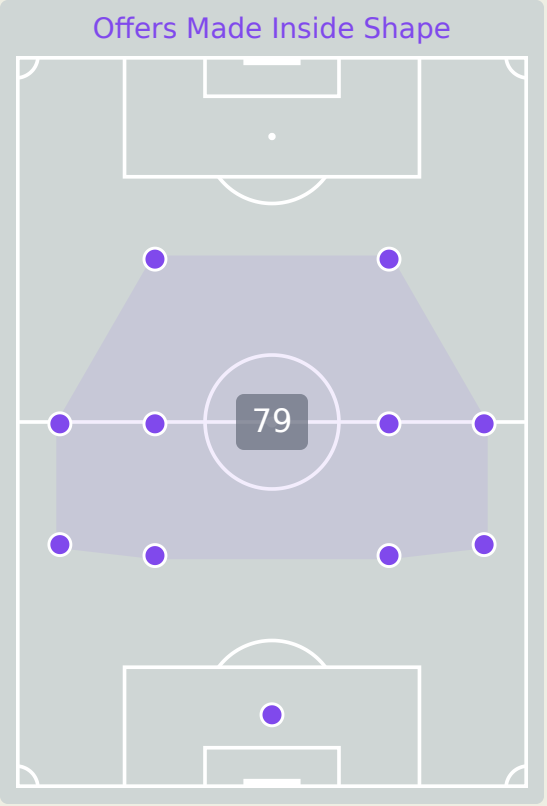
Offers Made in Final Third

75

Offers Made in Middle Third

24

Offers Made in Defensive Third



New Zealand

#	Player	Offers Made	Offers Received	% Made & Received
1	Harriet MULLER	0	0	0%
2	Charley MARCH	2	0	0%
3	Holly ROBINS	1	0	0%
6	Mikaela BANGALAN	17	4	23.5%
7	Grace DUNCAN	21	4	19%
8	Piper ONEILL	5	0	0%
9	Katie PUGH	37	5	13.5%
10	Pia VLOK	9	0	0%
11	Laura BENNETT	7	2	28.6%
16	Lane RIRINUI	2	2	100%
19	Heidi DRAAI	0	0	0%
12	Natalie YOUNG	1	1	100%
13	Taylor VUJNOVICH	28	8	28.6%
14	Sienna CANDY	38	13	34.2%
17	Kya SOLOMON	3	3	100%
20	Ariana VOSPER	6	2	33.3%



# Offering to Receive



126

Total Offers Made

46

Total Offers Received

Most Offers

36

Grace PHIRI

RIGHT WINGER

94

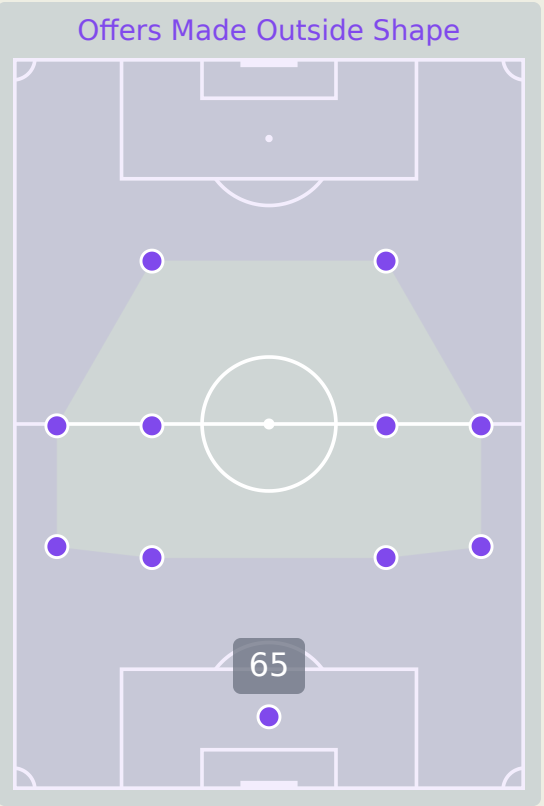
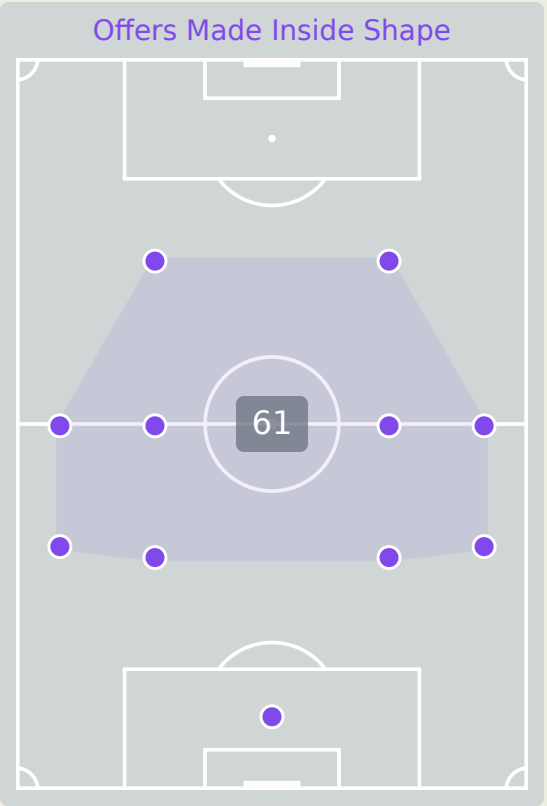
Offers Made in Final Third

26

Offers Made in Middle Third

6

Offers Made in Defensive Third



#	Player	Offers Made	Offers Received	% Made & Received
1	Mary NYANGU	0	0	0%
4	Nana MALANDA	2	2	100%
5	Precious MWAPE	6	2	33.3%
6	Grace PHIRI	36	7	19.4%
9	Mercy CHIPASULA	12	6	50%
10	Victoria MBALI	26	8	30.8%
12	Natasha NKAKA	10	7	70%
15	Sharon SIAKALOBA	1	0	0%
17	Taonga MUBANGA	7	3	42.9%
19	Lweendo HANONGO	17	7	41.2%
21	Faith KAUNDA	2	0	0%
7	KAJIYA	4	2	50%
11	Masela SEKESEKE	3	2	66.7%

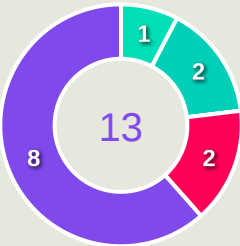


# Movement to Receive

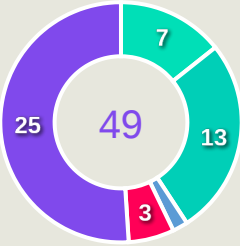


Movement Types by Phase

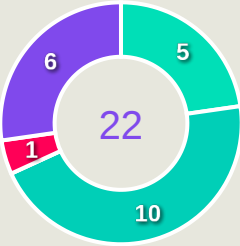
Final Third Phase



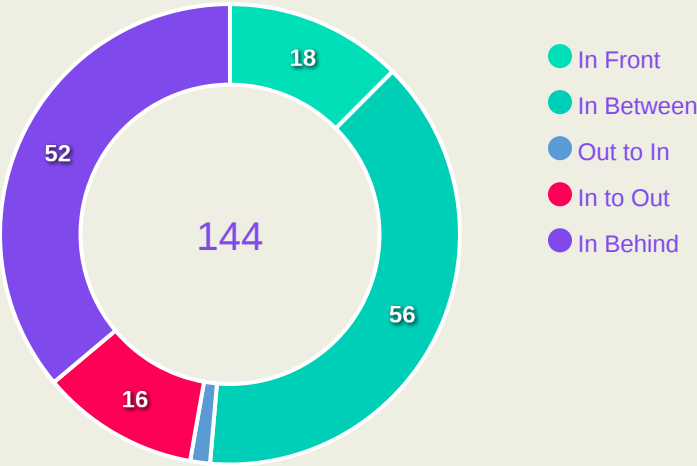
Progression Phase



Build Up Phase



All Movement Types

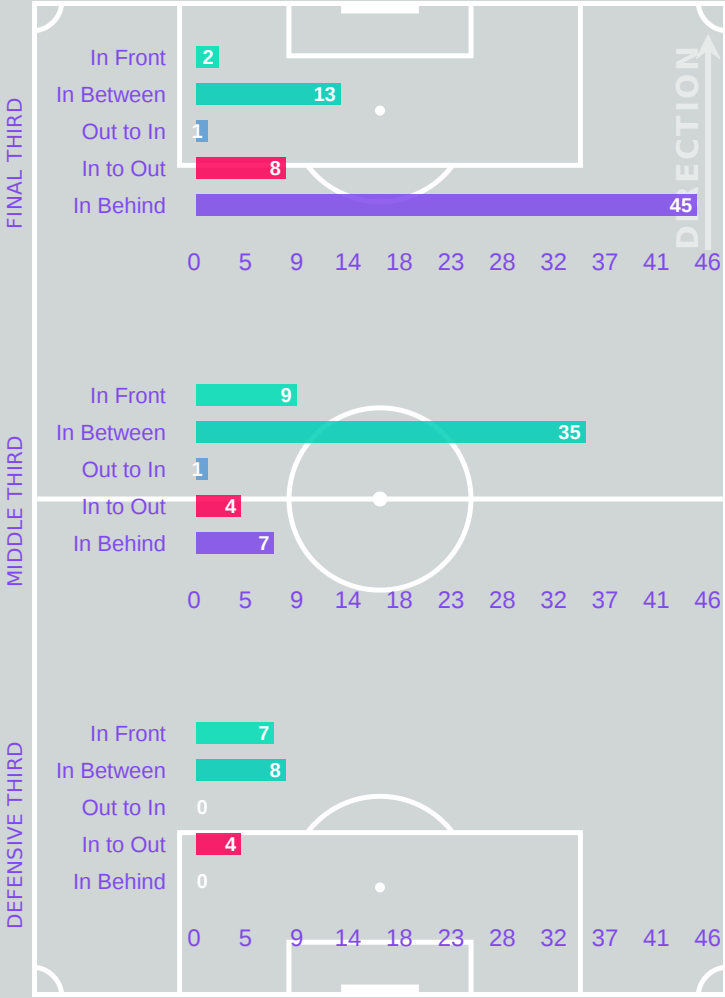


- In Front
- In Between
- Out to In
- In to Out
- In Behind

Top Ranked Players

Type	Player	Movements
In Front	6 Mikaela BANGALAN	5
In Between	14 Sienna CANDY	27
Out to In	7 Grace DUNCAN	1
In to Out	14 Sienna CANDY	5
In Behind	9 Katie PUGH	18

Movement Types Pitch Third



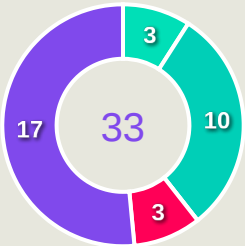


# Movement to Receive

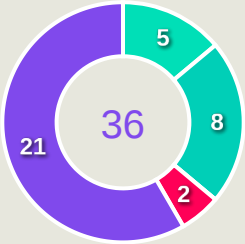


Movement Types by Phase

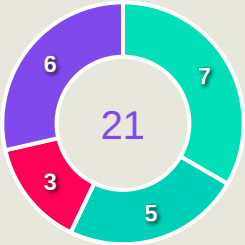
Final Third Phase



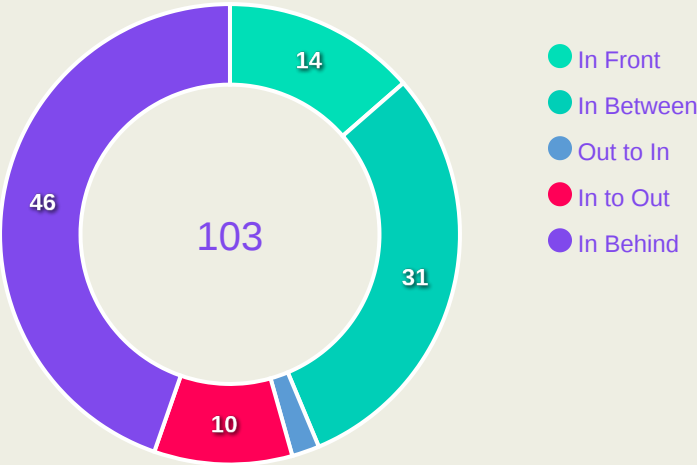
Progression Phase



Build Up Phase



All Movement Types

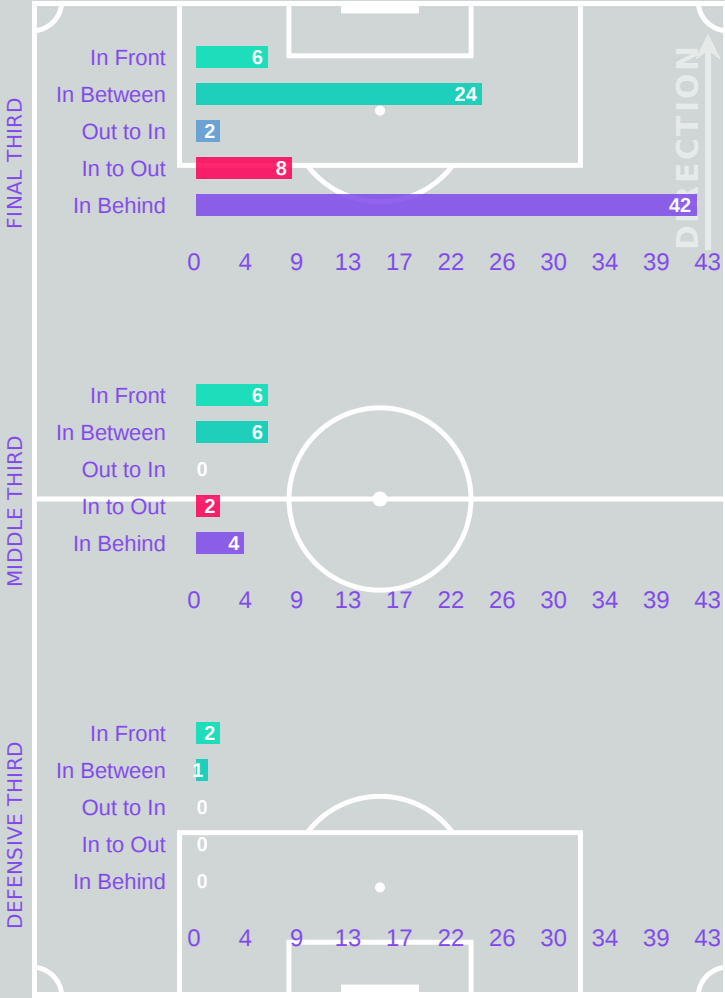


- In Front
- In Between
- Out to In
- In to Out
- In Behind

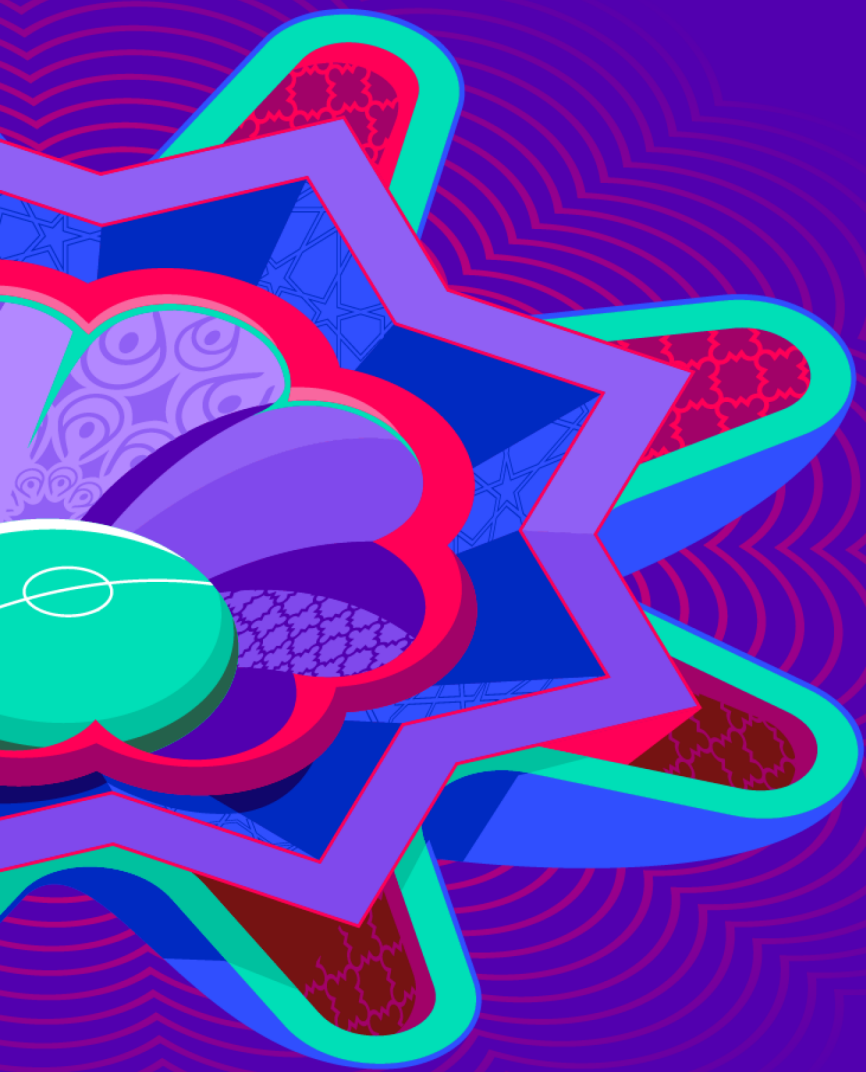
Top Ranked Players

Type	Player	Movements
In Front	17 Taonga MUBANGA	4
In Between	10 Victoria MBALI	13
Out to In	9 Mercy CHIPASULA	1
In to Out	6 Grace PHIRI	3
In Behind	6 Grace PHIRI	24

Movement Types Pitch Third







# OUT OF POSSESSION

New Zealand 0 - 4 Zambia



# Defensive Actions

57

Forced Turnovers

65

Possession Regained

7

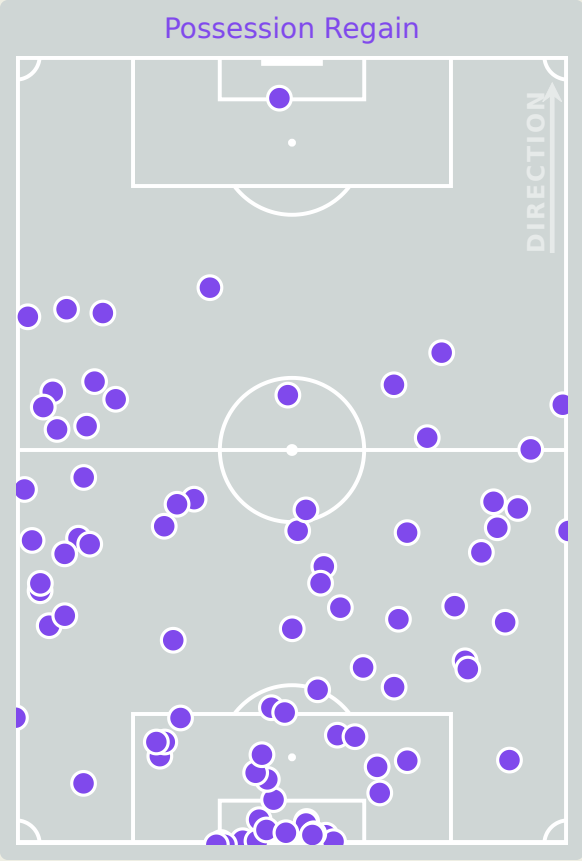
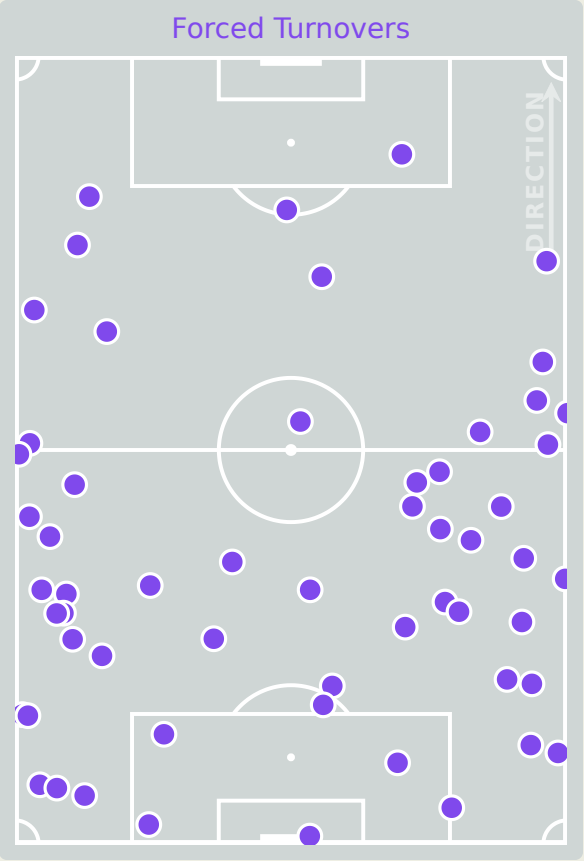
Interceptions

38

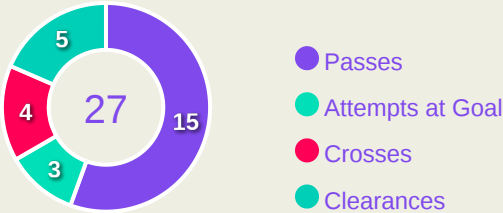
Tackles

1.59

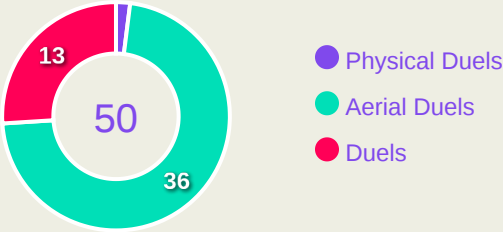
Possession Actions / Defensive Action



## Blocks



## Possession Contests



## Most Possession Regains

17

Harriet MULLER

GOALKEEPER

# New Zealand



#	Player	Total Possession Regains
1	Harriet MULLER	17
2	Charley MARCH	10
3	Holly ROBINS	6
6	Mikaela BANGALAN	4
7	Grace DUNCAN	2
8	Piper ONEILL	4
9	Katie PUGH	0
10	Pia VLOK	3
11	Laura BENNETT	0
16	Lane RIRINUI	8
19	Heidi DRAAI	2
12	Natalie YOUNG	1
13	Taylor VUJNOVICH	0
14	Sienna CANDY	2
17	Kya SOLOMON	3
20	Ariana VOSPER	3



# Defensive Actions

67

Forced Turnovers

81

Possession Regained

14

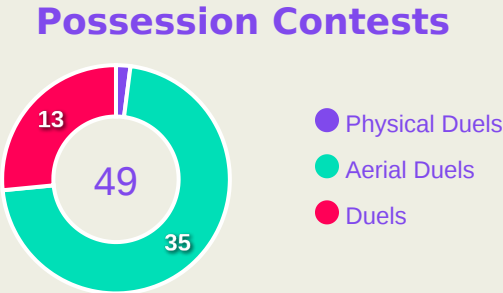
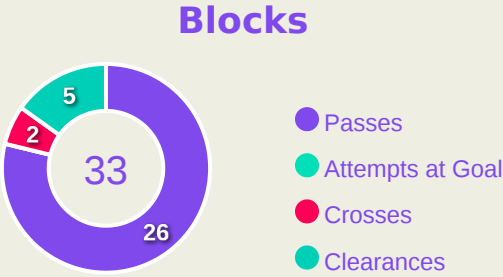
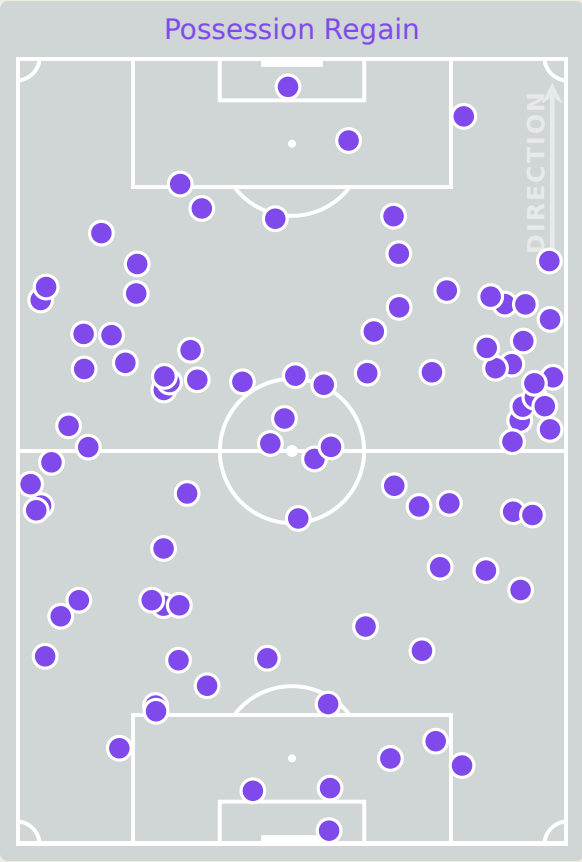
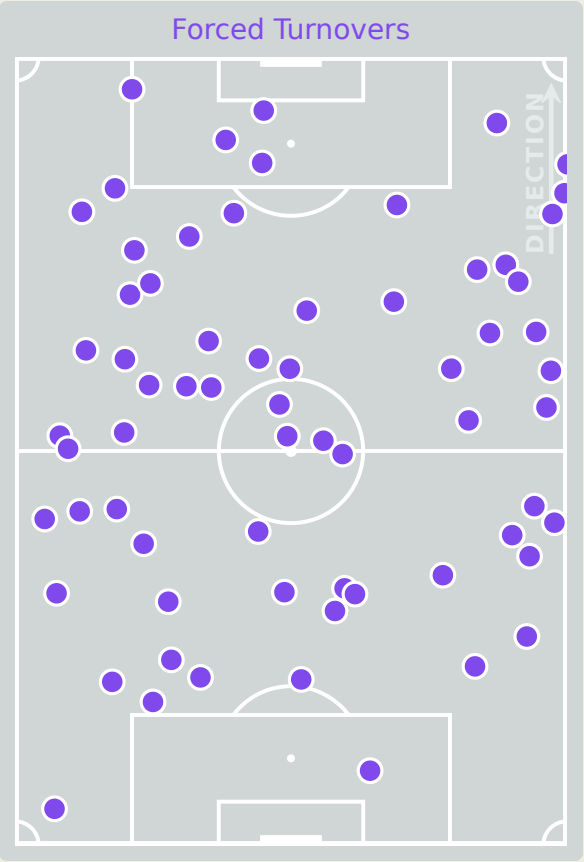
Interceptions

59

Tackles

2.16

Possession Actions / Defensive Action



Most Possession Regains

12

Natasha NKAKA

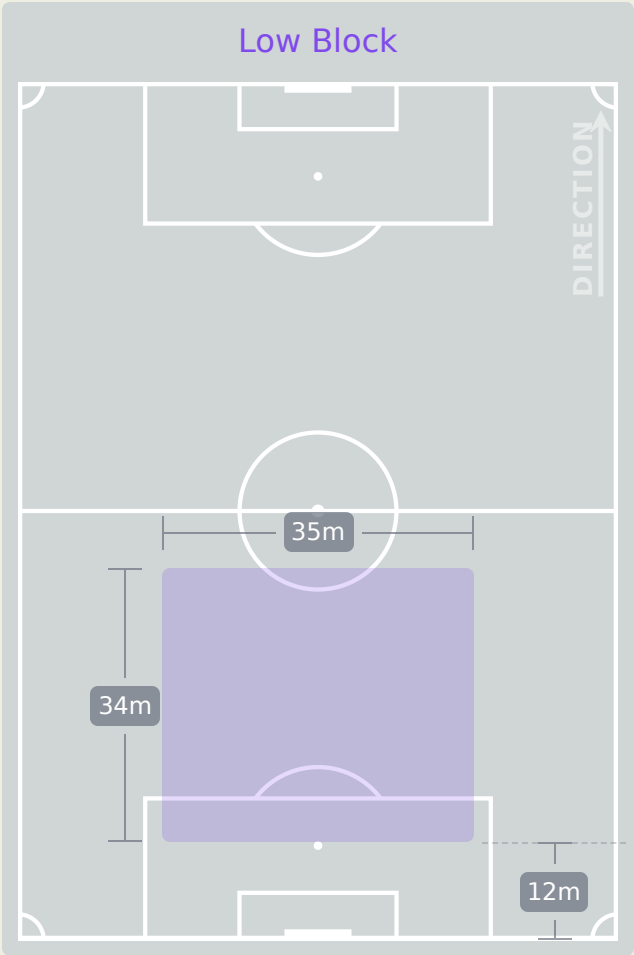
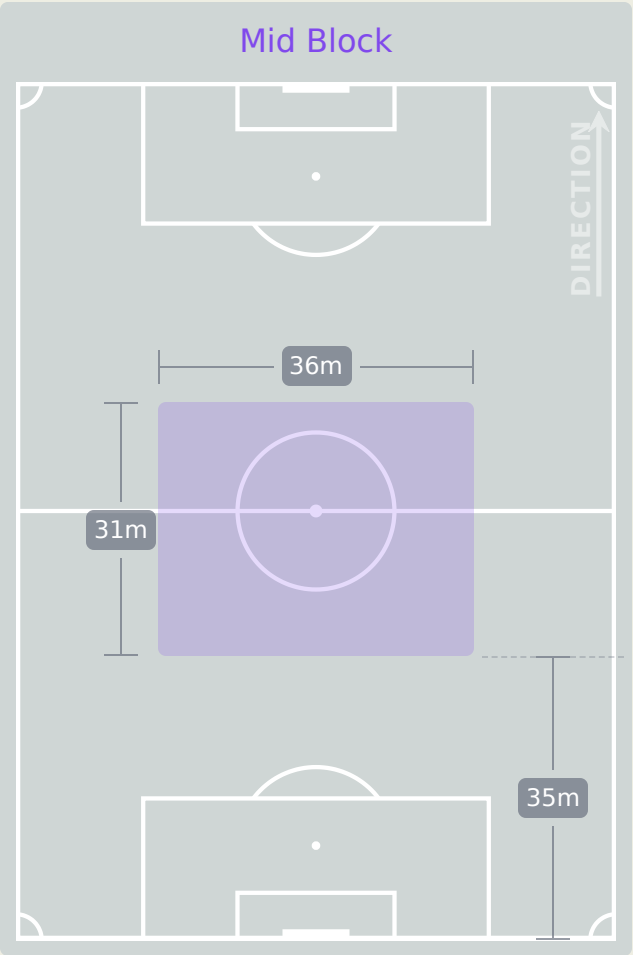
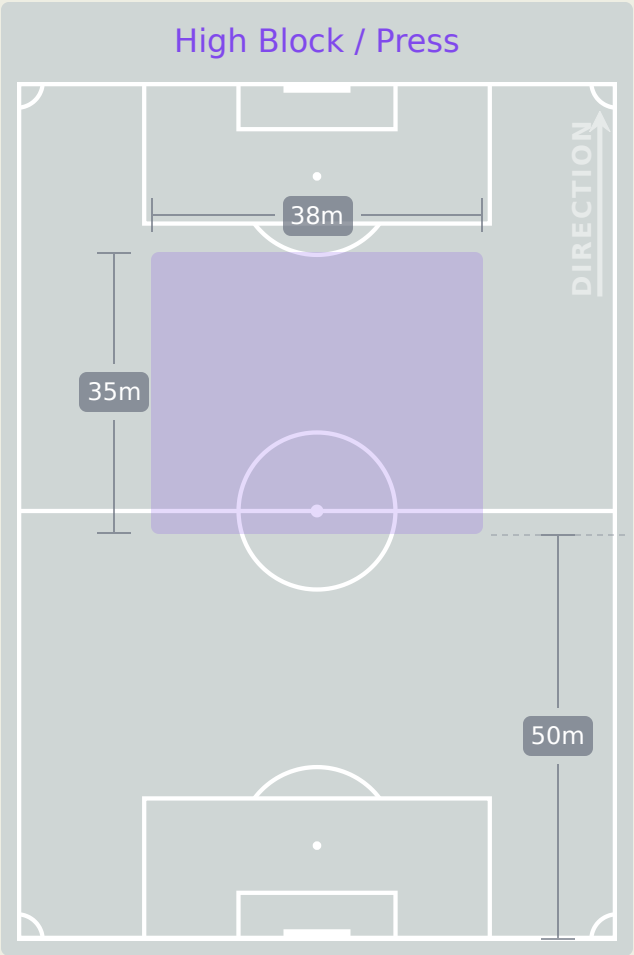
LEFT CENTRE MIDFIELD



#	Player	Total Possession Regains
1	Mary NYANGU	4
4	Nana MALANDA	1
5	Precious MWAPE	4
6	Grace PHIRI	1
9	Mercy CHIPASULA	11
10	Victoria MBALI	9
12	Natasha NKAKA	12
15	Sharon SIAKALOKA	5
17	Taonga MUBANGA	12
19	Lweendo HANONGO	10
21	Faith KAUNDA	8
7	KAJIYA	2
11	Masela SEKESEKE	2

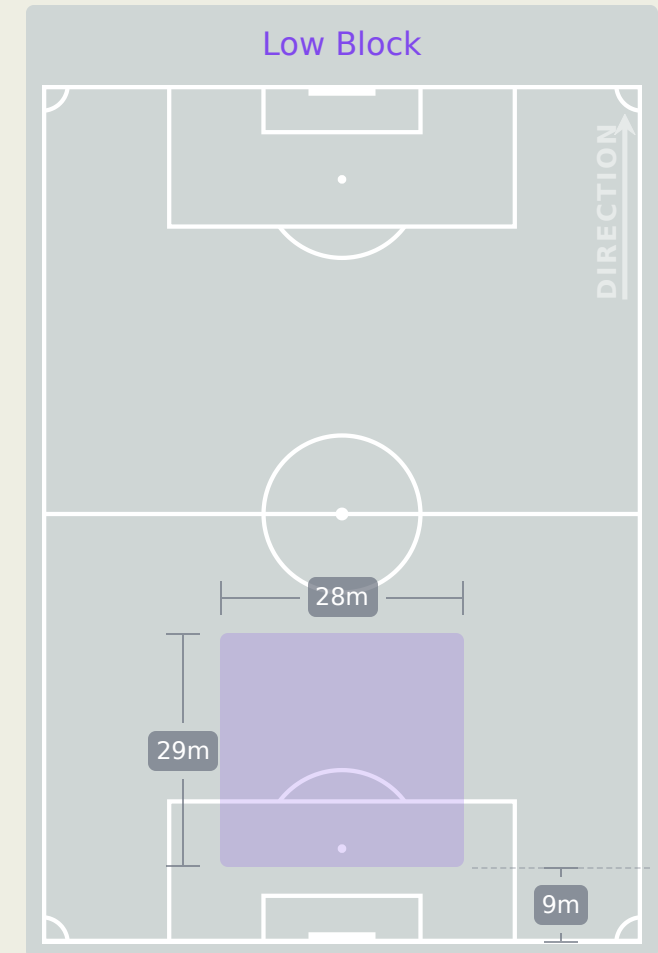
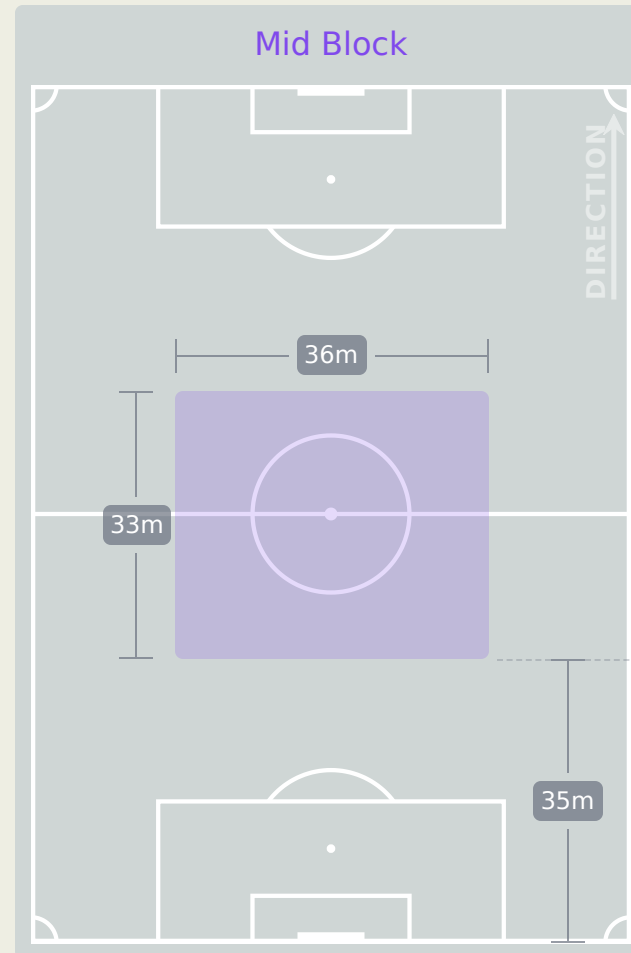
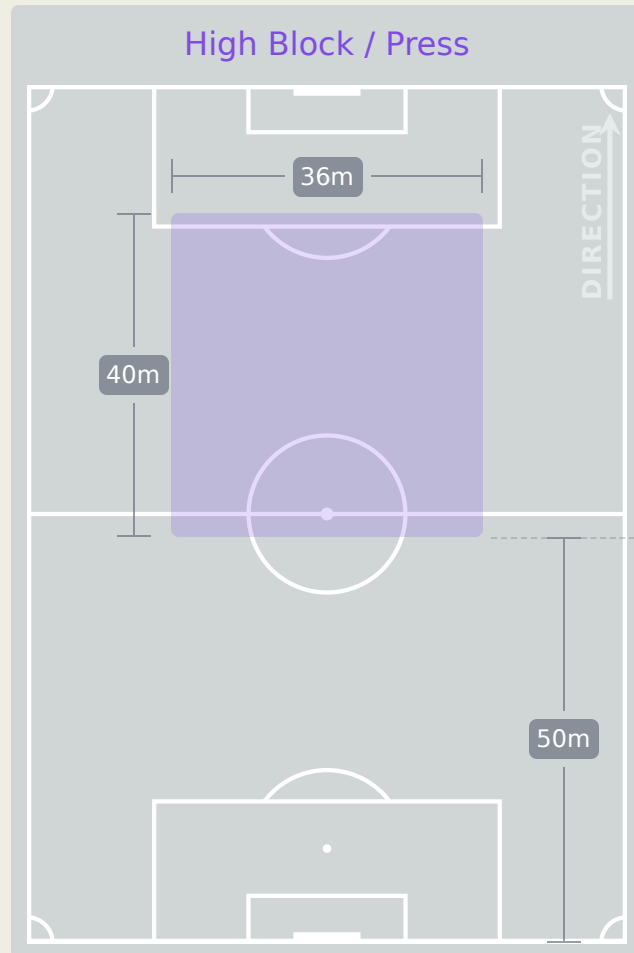


# Defensive Line Height & Team Length





# Defensive Line Height & Team Length

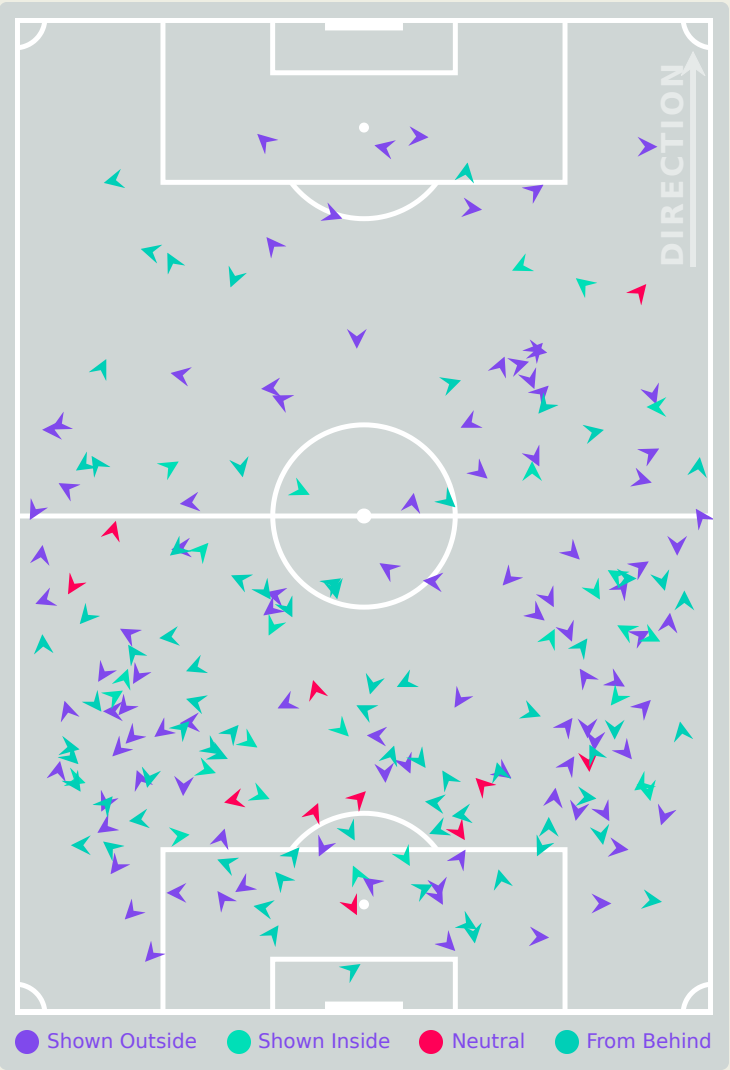




Defensive Pressure



New Zealand



207	Total Pressures	164
79	Direct Pressures	64
2.08s	Avg Pressure Duration	1.6s
57	Forced Turnovers	67
12.34s	Ball Recovery Time	6.59s
44	Pushing on into Pressing	53
101	Pushing on	88
26	Pressing Direction Inside	34
97	Pressing Direction Outside	100

Most Direct Pressures

11

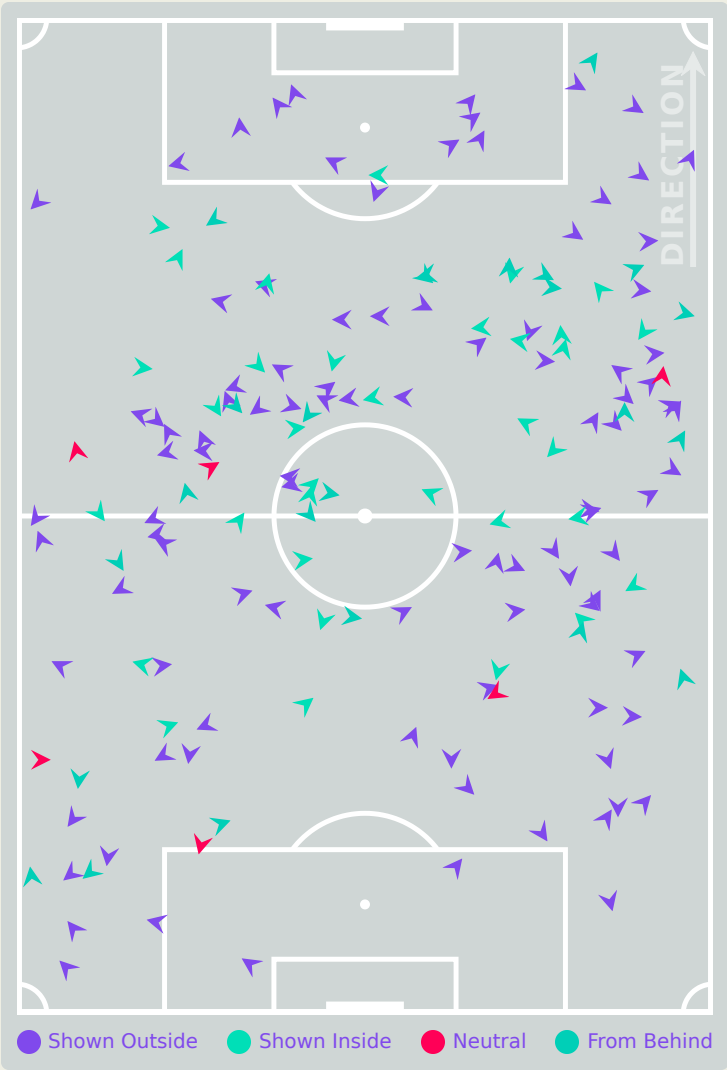
Holly ROBINS  
LEFT CENTRE BACK

Most Direct Pressures

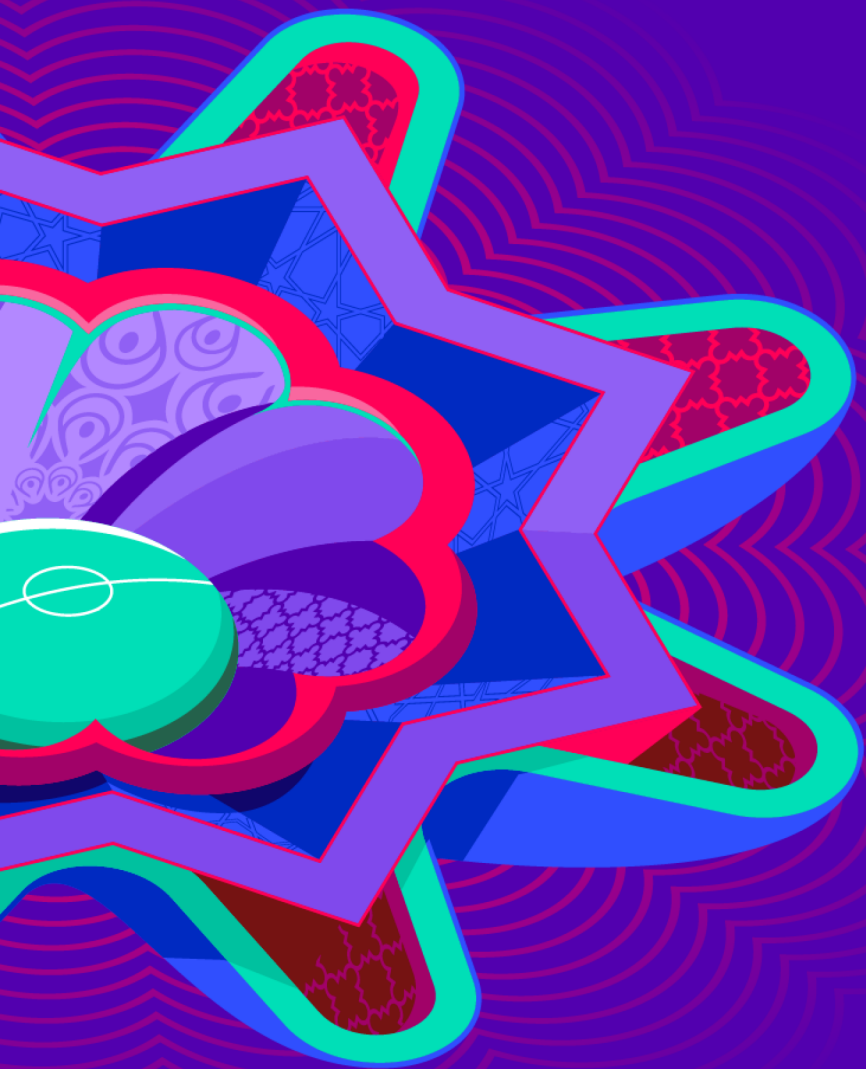
11

Mercy CHIPASULA  
LEFT WINGER

Zambia







# GOALKEEPING

New Zealand 0 - 4 Zambia

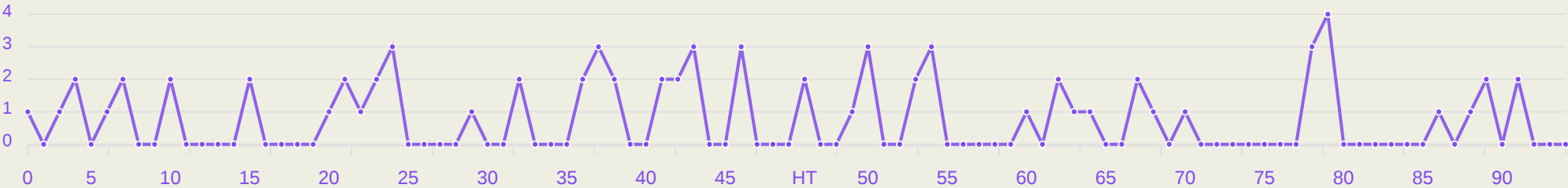


# Goalkeeping Involvement



New Zealand

New Zealand GK Involvement Timeline

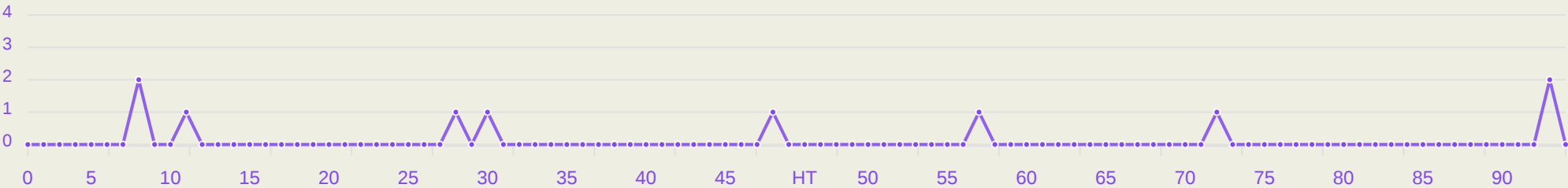


Total Involvements



Zambia

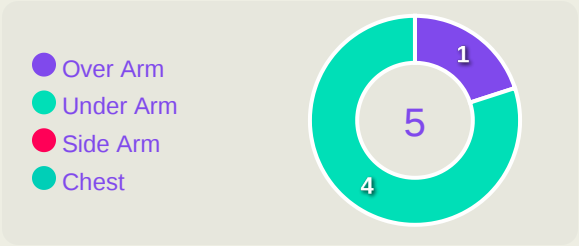
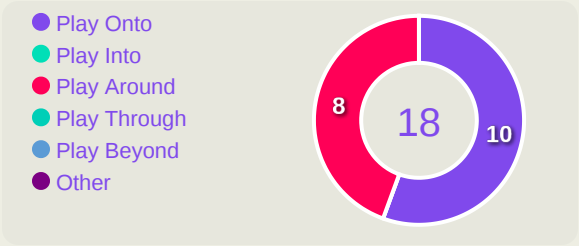
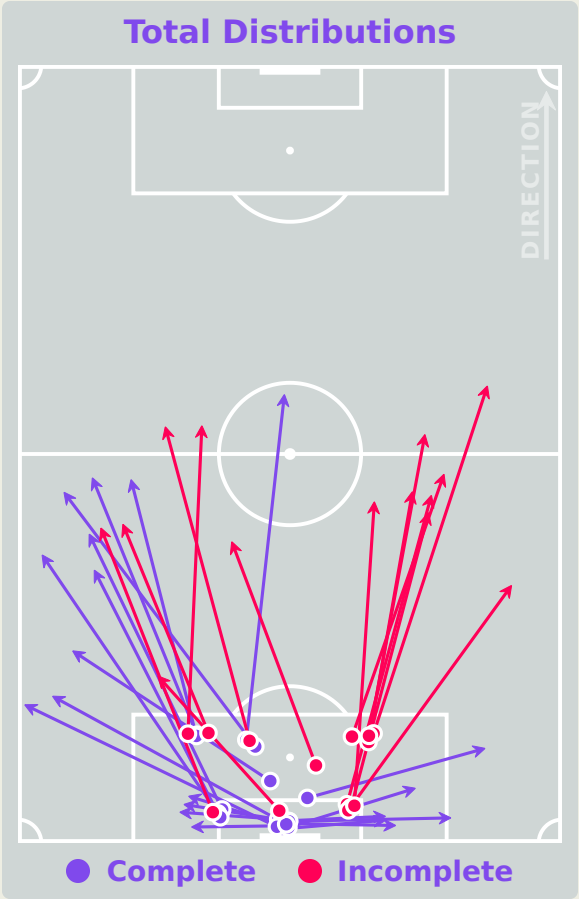
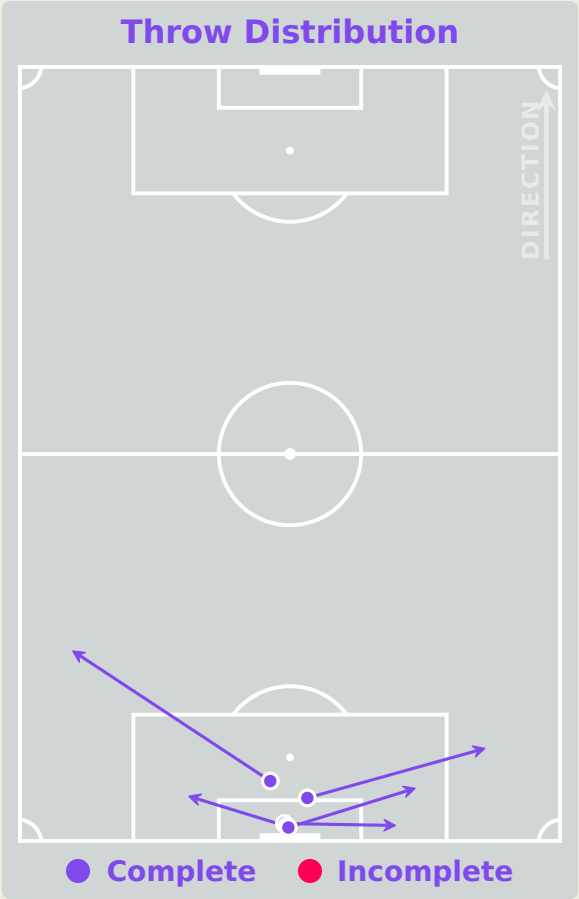
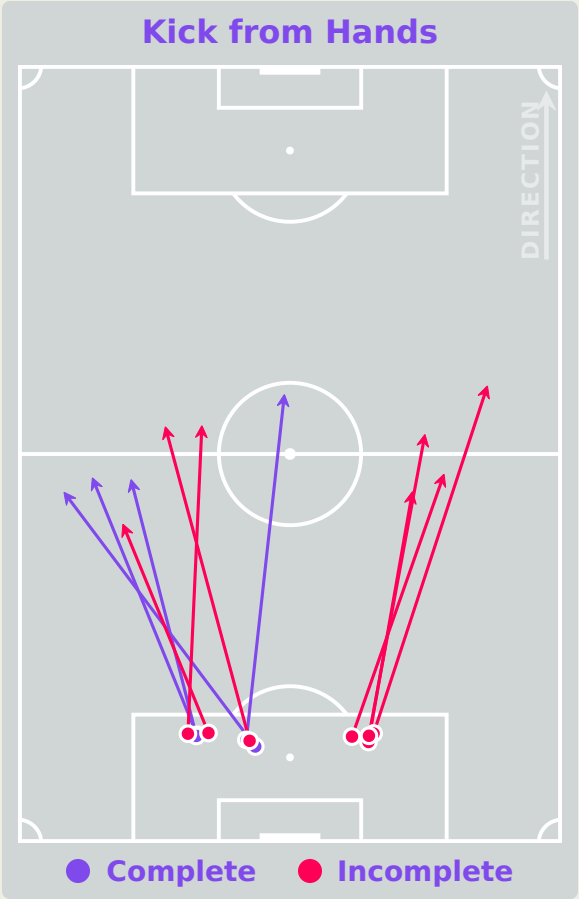
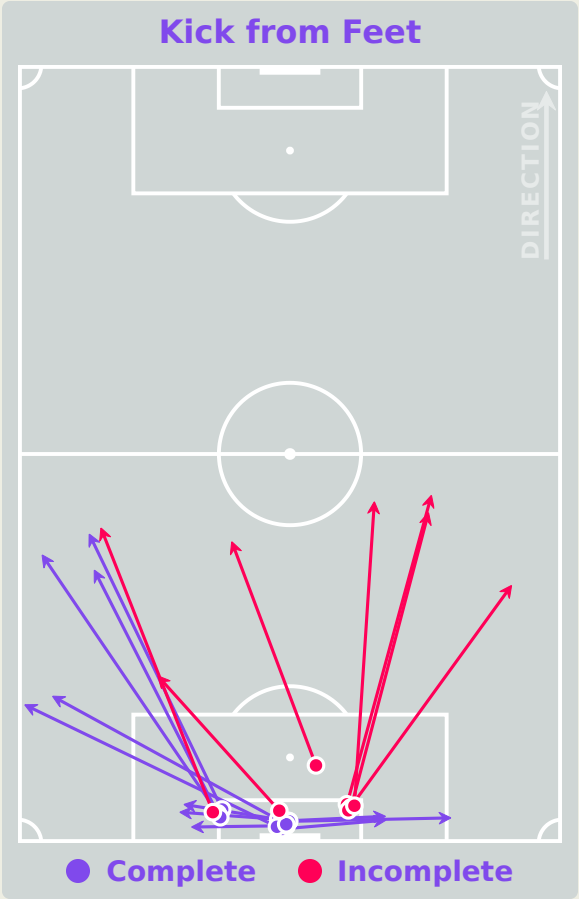
Zambia GK Involvement Timeline



Total Involvements

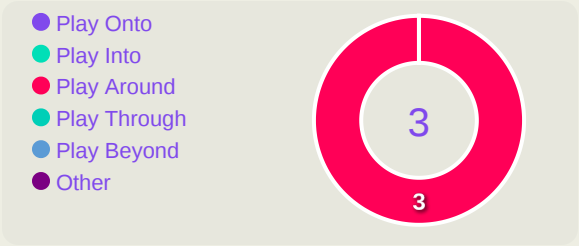
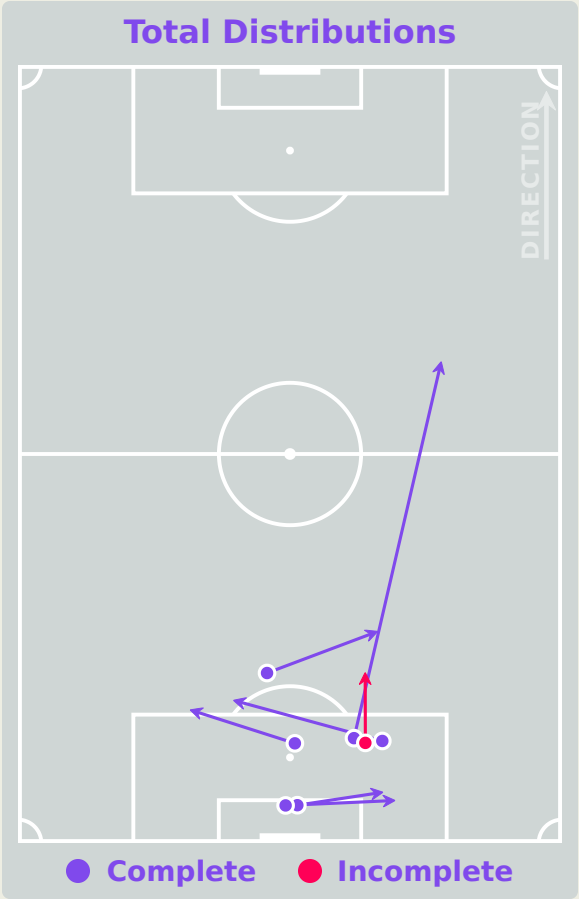
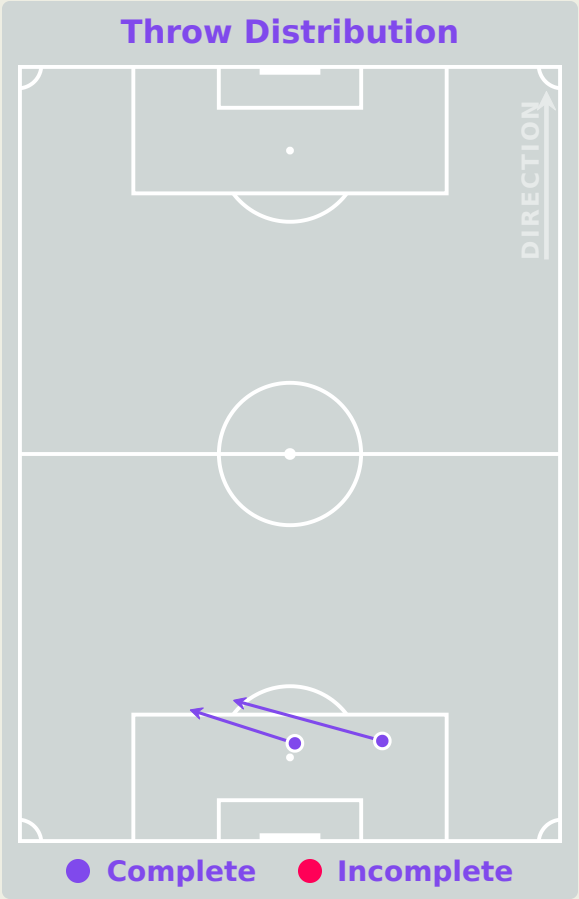
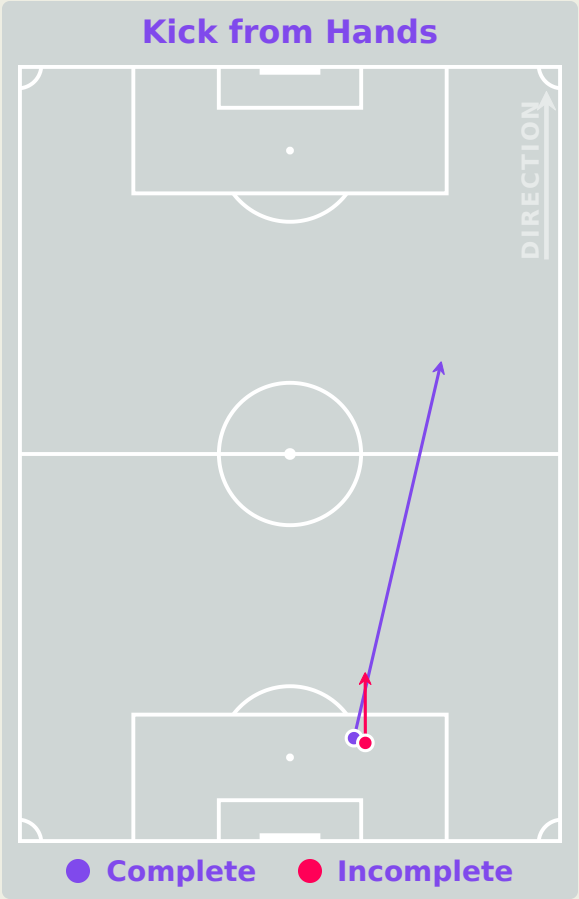
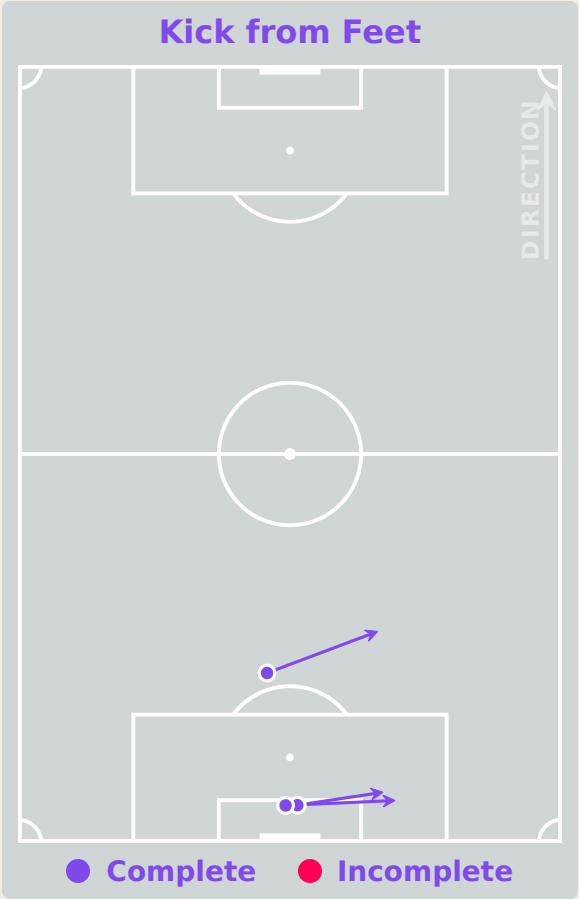


# Goalkeeping Distribution



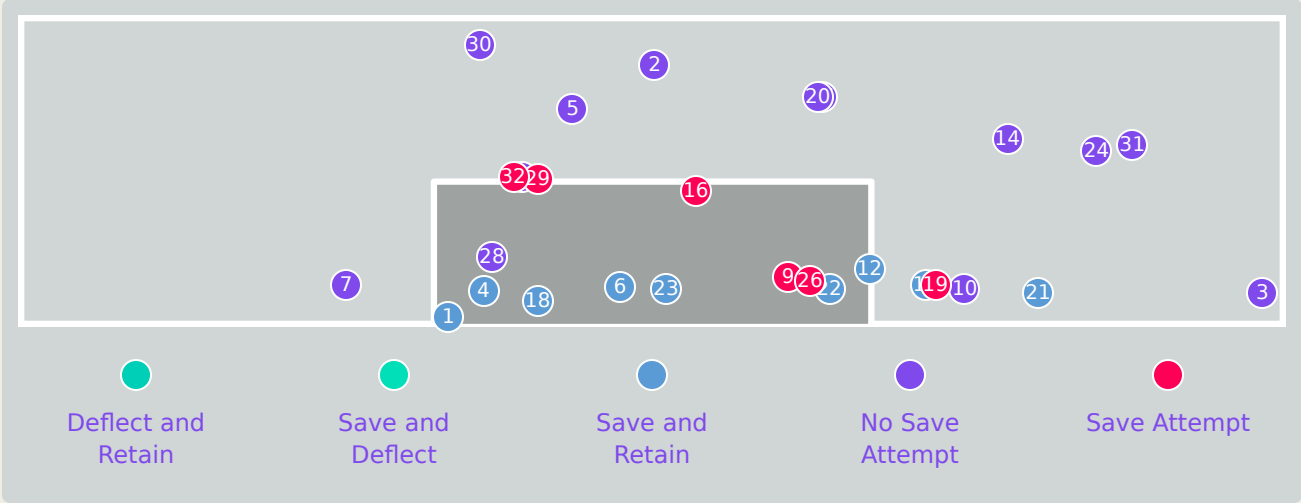
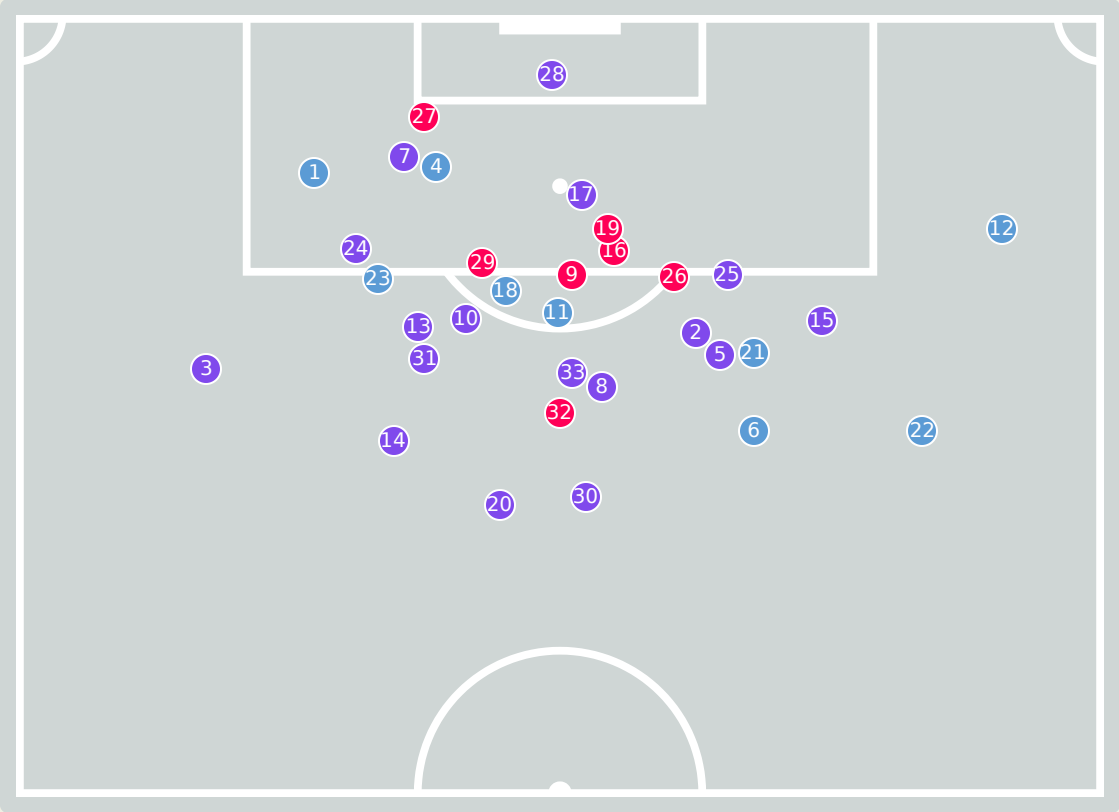


# Goalkeeping Distribution





Goal Prevention

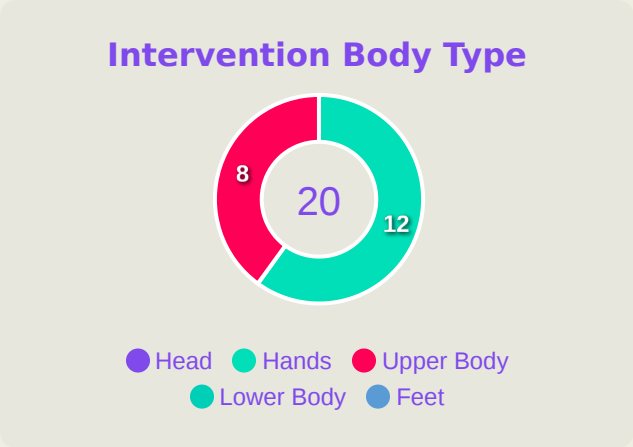
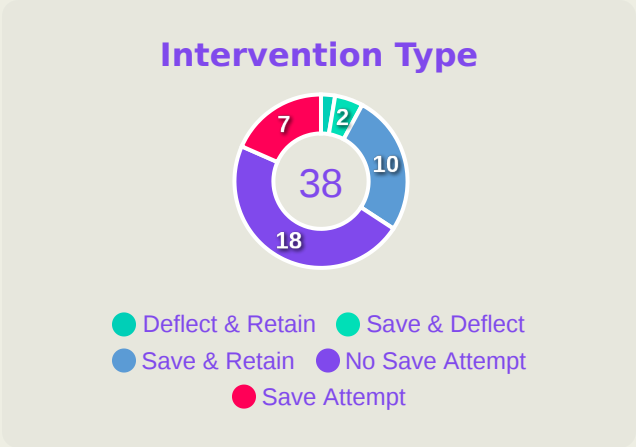


38

Total Attempts on Goal Faced

88

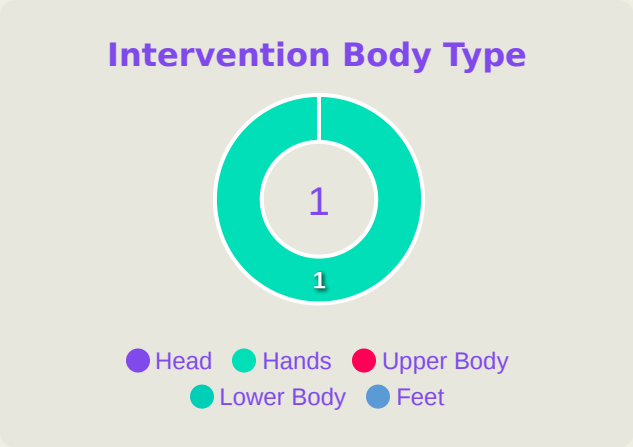
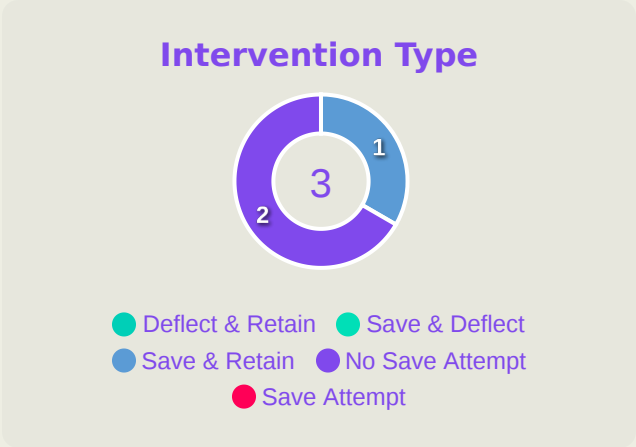
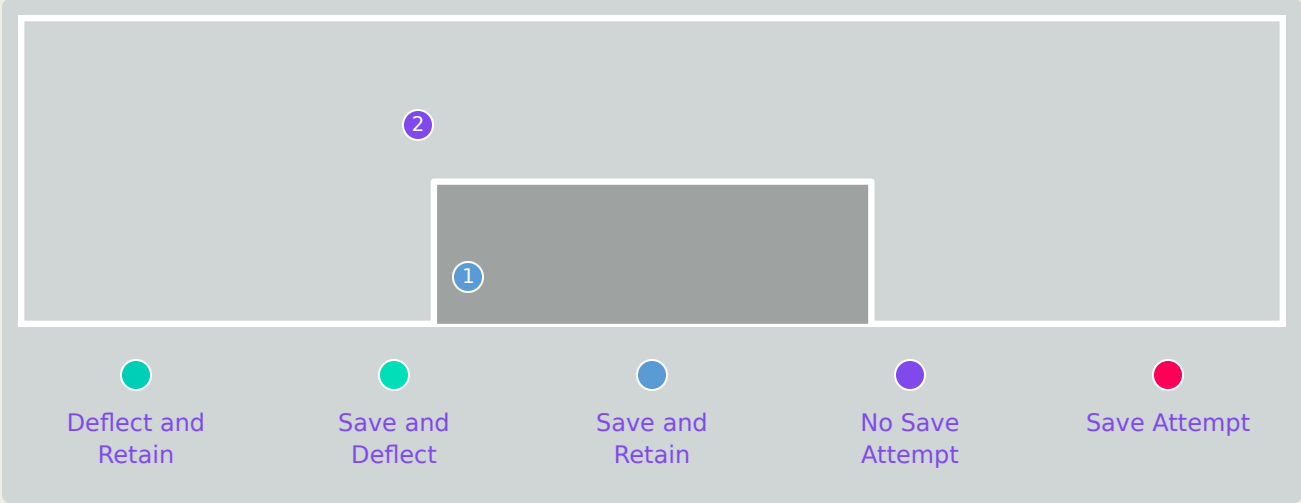
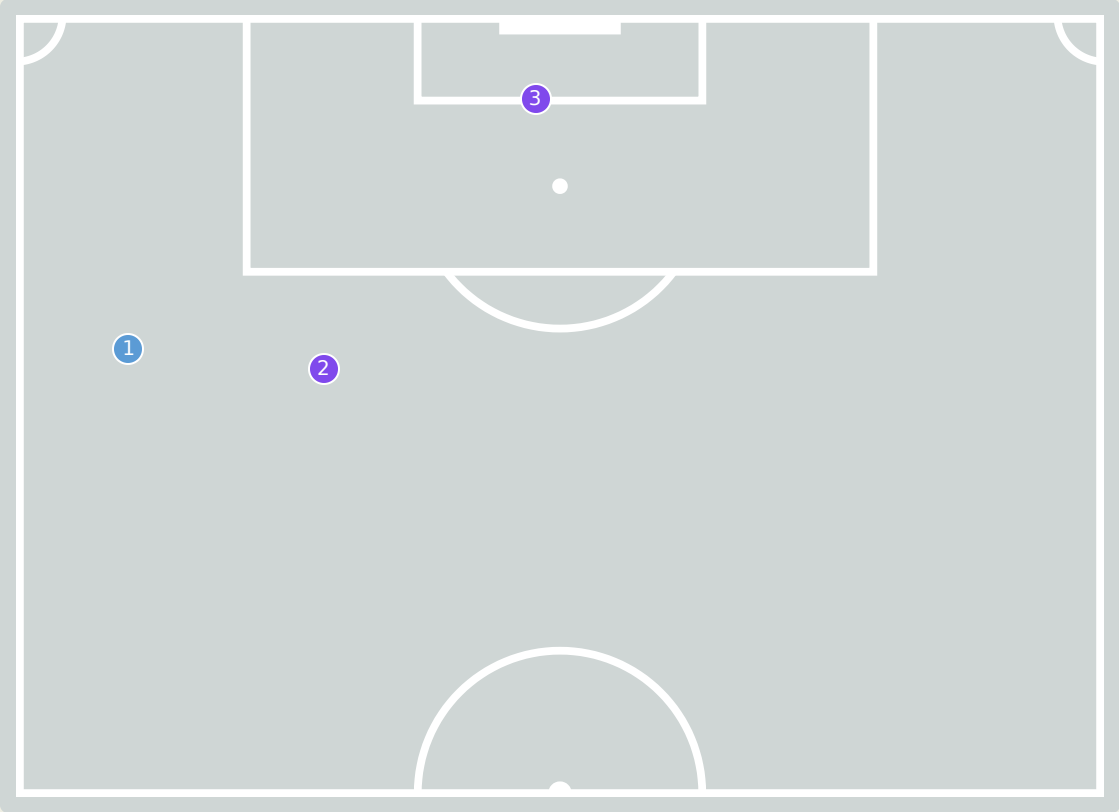
Save %



Total Attempts on Goal Faced	Total Goal Interventions	Save & Retain	Deflect & Retain	Save & Deflect	Save Attempt	No Save Attempt
38	12	10	1	2	7	18



Goal Prevention



Total Attempts on Goal Faced	Total Goal Interventions	Save & Retain	Deflect & Retain	Save & Deflect	Save Attempt	No Save Attempt
3	1	1	0	0	0	2



Aerial Control



1

Total Interventions

0

Complete

0

Punches

0

Incomplete

1

Complete

1

Claims

0

Incomplete

0

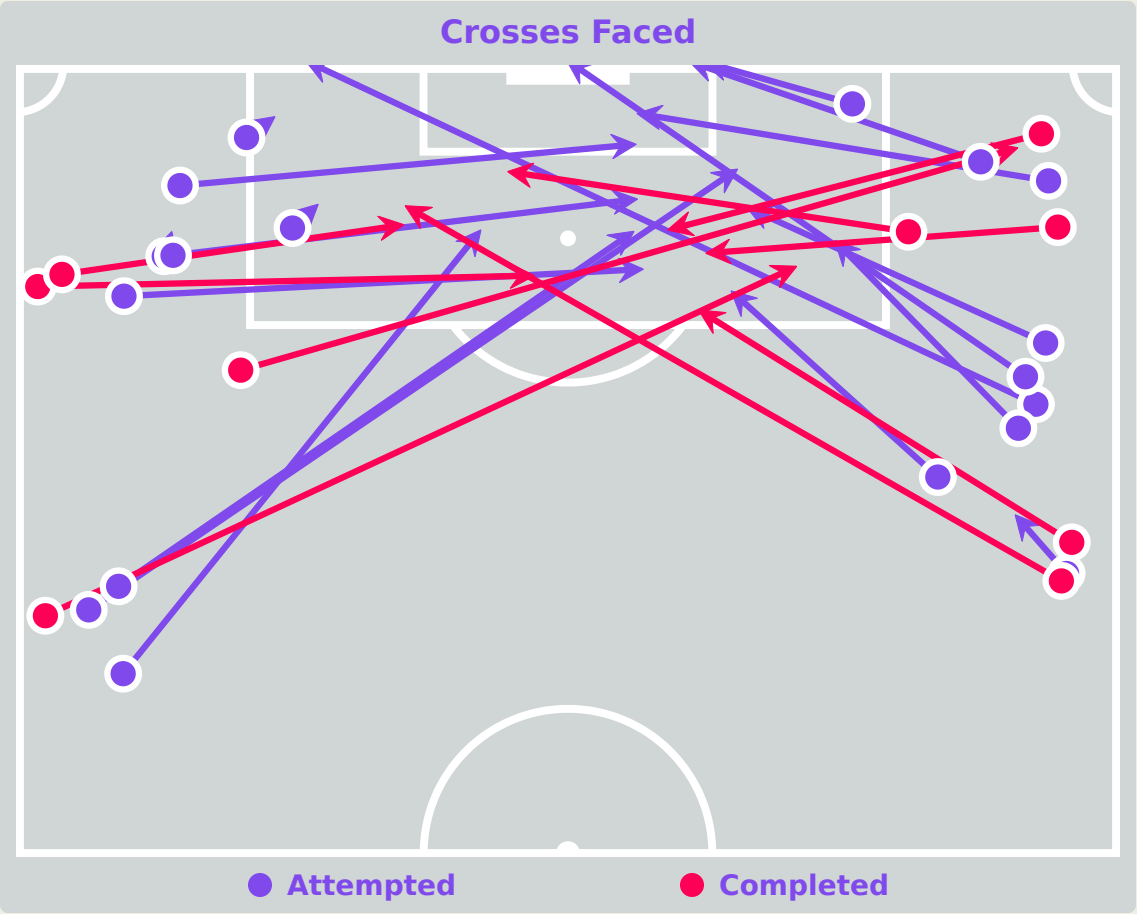
Complete

0

Tipped/Palmed

0

Incomplete



Delivery Types Faced

Total	In Swing	Out Swing	Driven	Lofted	Cutback	Push
30	2	13	2	8	0	5



# Aerial Control



0

Total Interventions

0

Complete

0

Punches

0

Incomplete

0

Complete

0

Claims

0

Incomplete

0

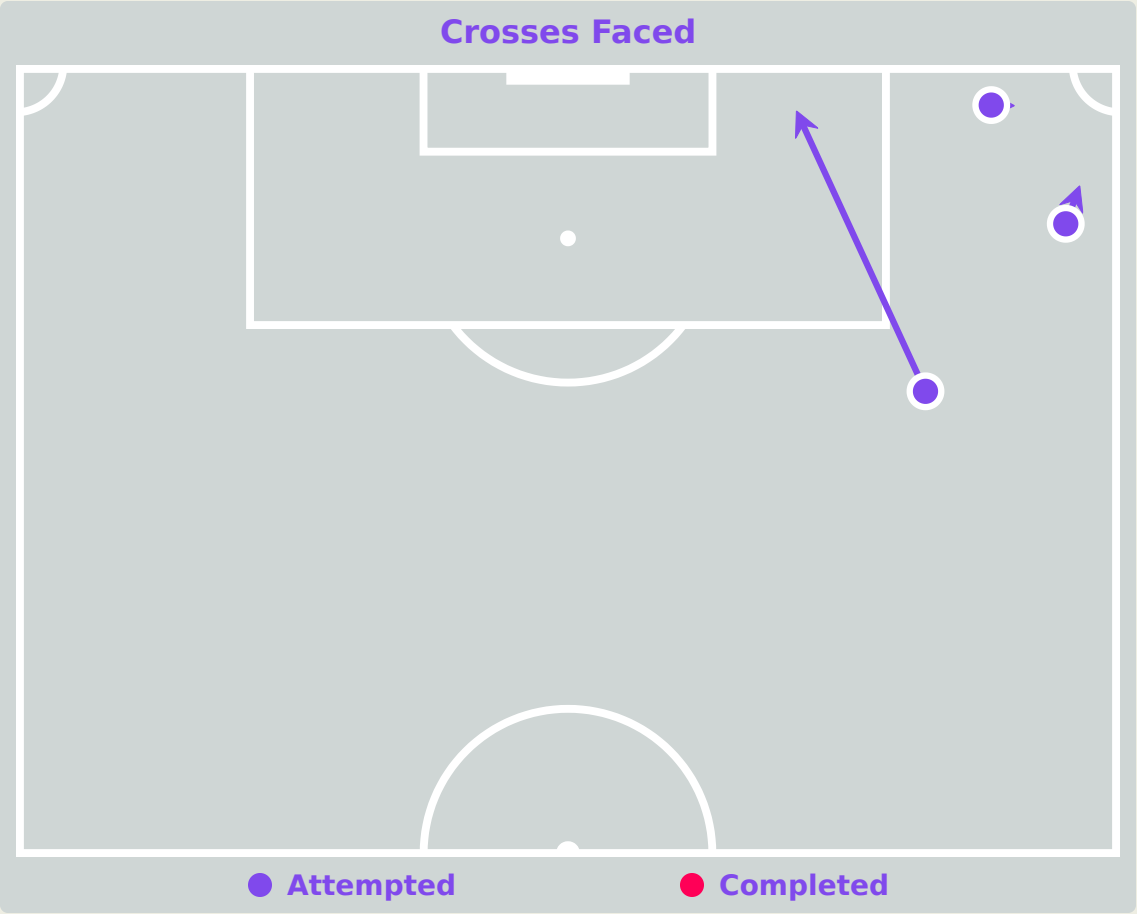
Complete

0

Tipped/Palmed

0

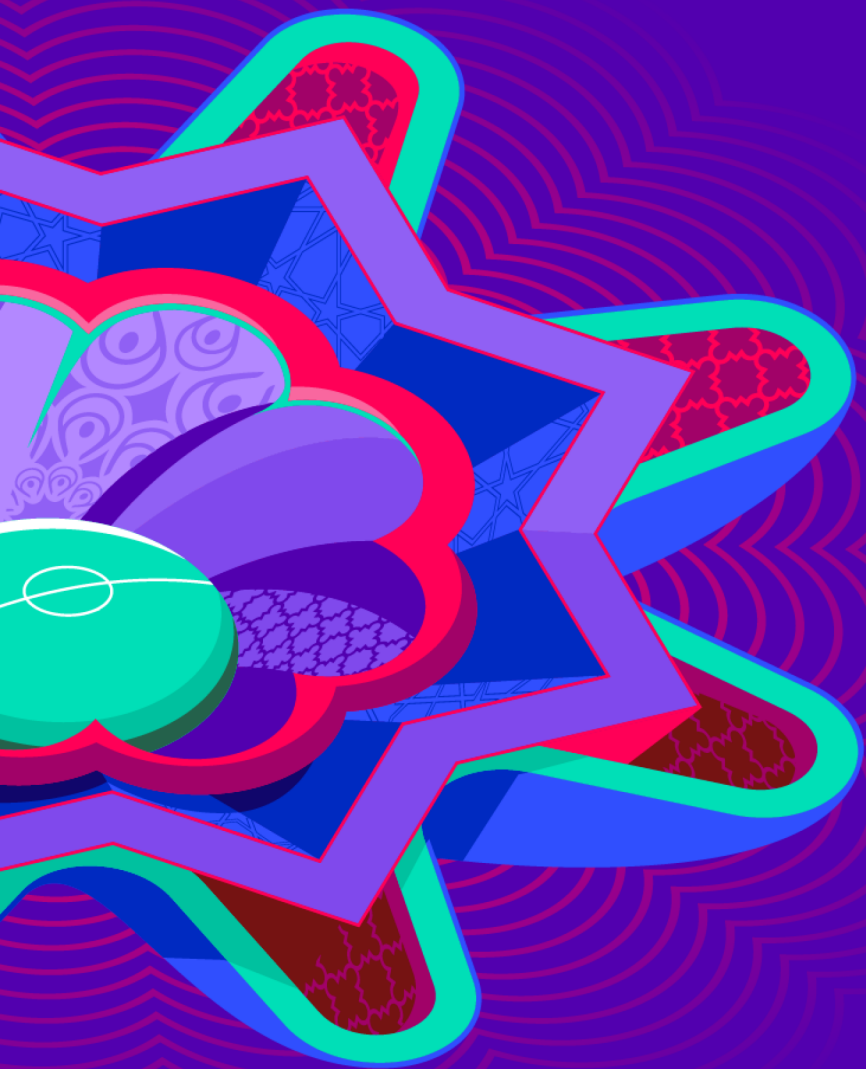
Incomplete



Delivery Types Faced

Total	In Swing	Out Swing	Driven	Lofted	Cutback	Push
8	1	2	1	2	0	2





# SET PLAYS

New Zealand 0 - 4 Zambia



# Set Plays

50

Total Set Plays

5

Total Free Kicks

0

Total Penalties

5

Total Corners

40

Total Throw Ins

Free Kicks	
Type	Total
Direct	4
Direct (on target)	0
Direct (off target)	0
Indirect	1

New Zealand

Corners			
Delivery Type	From Left Side	From Right Side	Total
Direct to Area	1	3	4
Short	0	1	1
Edge of Penalty Area	0	0	0

Corners	
Delivery Style	Total
Inswing	1
Outswing	1
Driven	0
Lofted	1



# Set Plays



48

Total Set Plays

10

Total Free Kicks

0

Total Penalties

4

Total Corners

34

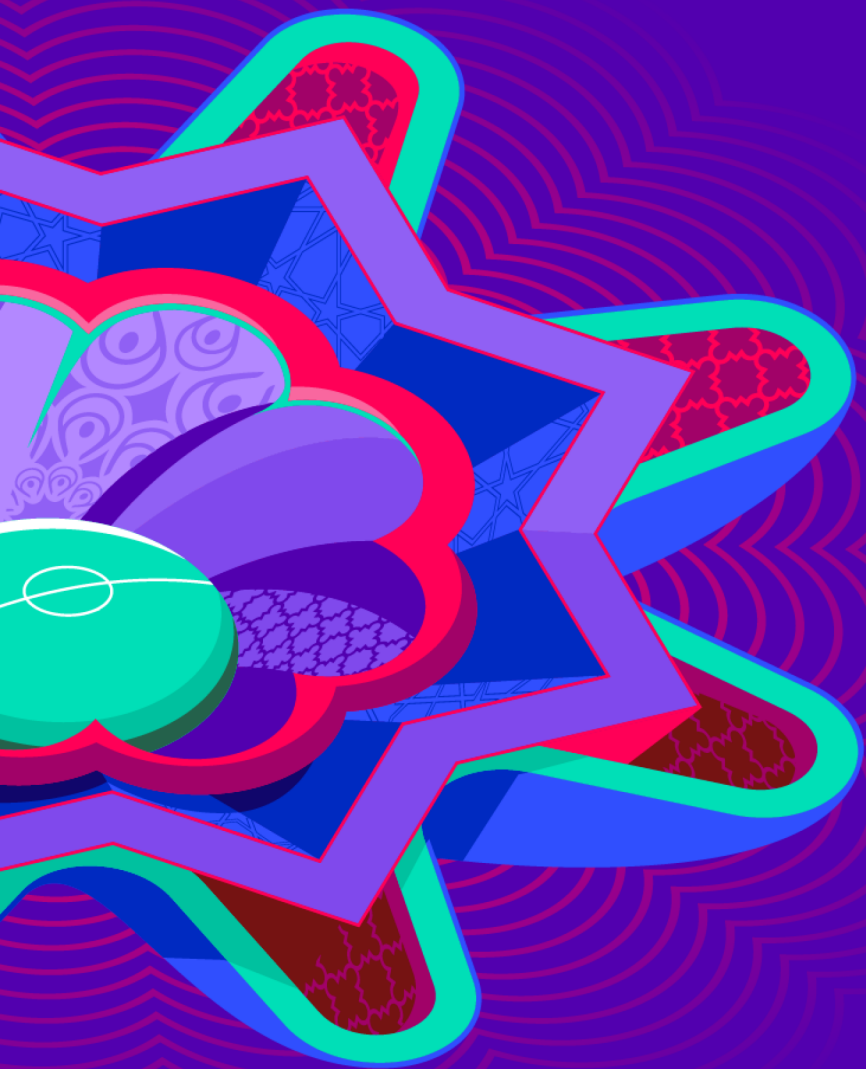
Total Throw Ins

Free Kicks	
Type	Total
Direct	9
Direct (on target)	0
Direct (off target)	1
Indirect	1

Corners			
Delivery Type	From Left Side	From Right Side	Total
Direct to Area	3	0	3
Short	0	1	1
Edge of Penalty Area	0	0	0

Corners	
Delivery Style	Total
Inswing	2
Outswing	0
Driven	0
Lofted	1





# INDIVIDUAL DATA IN POSSESSION

**New Zealand 0 - 4 Zambia**



In Possession - Distributions



#	Player	Passes Attempted	Passes Completed	Pass Completion %	Switches of Play	Crosses Attempted	Crosses Completed	Line Breaks Attempted	Line Breaks Completed	Line Break Completion %	Ball Progressions	Take Ons	Step Ins	Attempts at Goal	Goals
1	Harriet MULLER	34	20	59%	0	0	0	20	8	40%	0	0	0	0	0
2	Charley MARCH	43	18	42%	0	0	0	25	10	40%	3	3	0	0	0
3	Holly ROBINS	21	16	76%	0	0	0	6	4	67%	0	0	0	1	0
6	Mikaela BANGALAN	13	9	69%	1	0	0	7	3	43%	5	3	2	0	0
7	Grace DUNCAN	11	3	27%	0	3	1	5	1	20%	1	0	1	0	0
8	Piper ONEILL	20	11	55%	0	0	0	9	4	44%	1	1	0	0	0
9	Katie PUGH	9	5	56%	0	0	0	2	1	50%	1	1	0	1	0
10	Pia VLOK	15	7	47%	0	3	0	7	3	43%	7	7	0	1	0
11	Laura BENNETT	14	4	29%	0	0	0	7	3	43%	2	2	0	0	0
16	Lane RIRINUI	21	13	62%	0	0	0	11	6	55%	0	0	0	0	0
19	Heidi DRAAI	22	12	55%	0	0	0	11	6	55%	2	2	0	0	0
12	Natalie YOUNG	8	5	62%	0	0	0	3	2	67%	0	0	0	0	0
13	Taylor VUJNOVICH	9	7	78%	0	1	0	1	1	100%	0	0	0	0	0
14	Sienna CANDY	22	18	82%	0	1	0	10	9	90%	3	3	0	0	0
17	Kya SOLOMON	7	5	71%	0	0	0	3	2	67%	4	4	0	0	0
20	Ariana VOSPER	21	10	48%	0	0	0	15	6	40%	2	2	0	0	0



In Possession - Offers & Receptions



			Offer movement types						
#	Player	Total Offers	In Front	In Between	Out to In	In to Out	In Behind	No Movement	Offers Received
1	Harriet MULLER	0	0	0	0	0	0	0	0
2	Charley MARCH	2	0	0	0	0	1	1	0
3	Holly ROBINS	1	1	0	0	0	0	0	0
6	Mikaela BANGALAN	17	5	8	0	1	3	0	4
7	Grace DUNCAN	21	2	1	1	3	6	8	4
8	Piper ONEILL	5	5	0	0	0	0	0	0
9	Katie PUGH	37	0	15	0	3	18	1	5
10	Pia VLOK	9	1	0	0	1	5	2	0
11	Laura BENNETT	7	0	0	0	1	1	5	2
16	Lane RIRINUI	2	0	0	0	0	0	2	2
19	Heidi DRAAI	0	0	0	0	0	0	0	0
12	Natalie YOUNG	1	0	1	0	0	0	0	1
13	Taylor VUJNOVICH	28	0	4	1	2	13	8	8
14	Sienna CANDY	38	3	27	0	5	2	1	13
17	Kya SOLOMON	3	1	0	0	0	0	2	3
20	Ariana VOSPER	6	0	0	0	0	3	3	2



In Possession - Distributions



#	Player	Passes Attempted	Passes Completed	Pass Completion %	Switches of Play	Crosses Attempted	Crosses Completed	Line Breaks Attempted	Line Breaks Completed	Line Break Completion %	Ball Progressions	Take Ons	Step Ins	Attempts at Goal	Goals
1	Mary NYANGU	7	6	86%	0	0	0	1	1	100%	0	0	0	0	0
4	Nana MALANDA	23	14	61%	0	0	0	14	7	50%	1	0	1	0	0
5	Precious MWAPE	17	11	65%	0	0	0	11	6	55%	0	0	0	1	0
6	Grace PHIRI	18	16	89%	0	0	0	1	1	100%	2	2	0	4	0
9	Mercy CHIPASULA	36	23	64%	1	8	2	14	7	50%	6	6	0	15	1
10	Victoria MBALI	33	27	82%	0	0	0	5	4	80%	2	2	0	5	1
12	Natasha NKAKA	36	22	61%	1	8	4	16	10	62%	9	7	2	3	0
15	Sharon SIAKALOBA	24	18	75%	0	1	0	8	6	75%	2	2	0	1	0
17	Taonga MUBANGA	31	22	71%	0	0	0	13	9	69%	3	1	2	1	0
19	Lweendo HANONGO	41	25	61%	0	5	2	22	14	64%	5	2	3	2	0
21	Faith KAUNDA	38	26	68%	1	7	2	28	16	57%	10	9	1	0	0
7	KAJIYA	7	7	100%	0	0	0	2	2	100%	0	0	0	0	0
11	Masela SEKESEKE	7	5	71%	0	1	0	2	1	50%	1	1	0	1	1

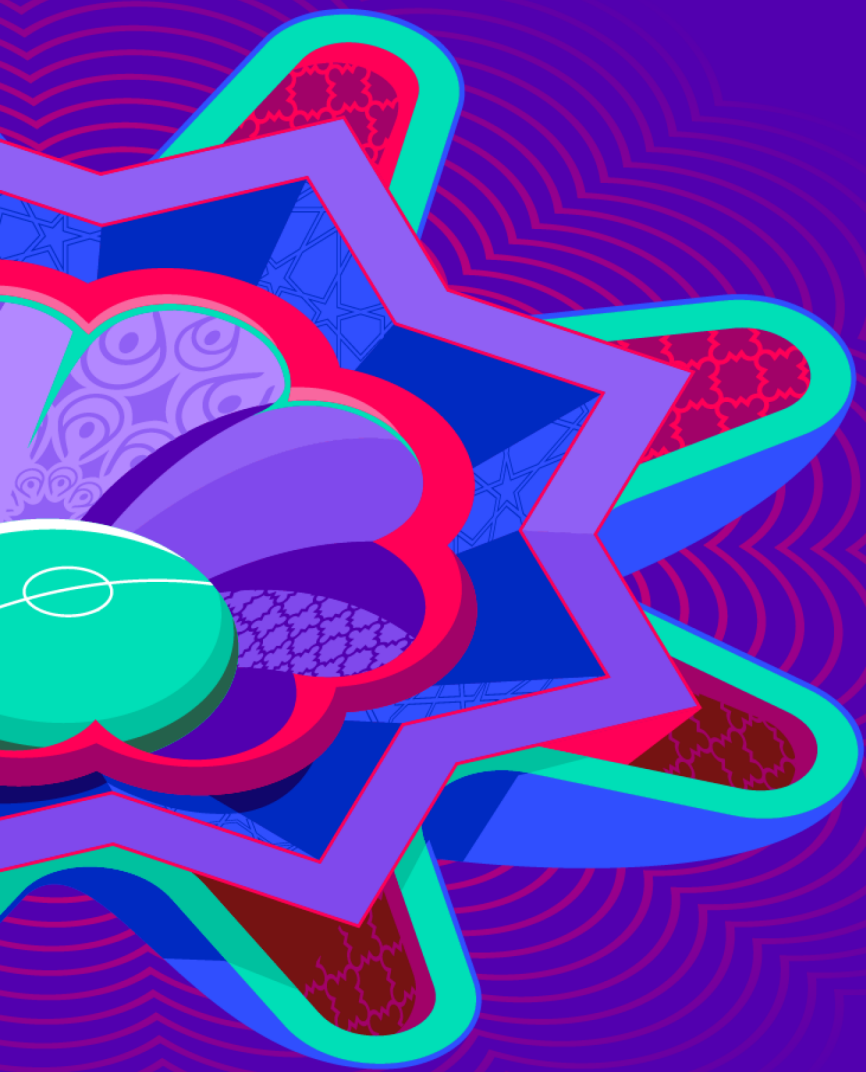


In Possession - Offers & Receptions



			Offer movement types						
#	Player	Total Offers	In Front	In Between	Out to In	In to Out	In Behind	No Movement	Offers Received
1	Mary NYANGU	0	0	0	0	0	0	0	0
4	Nana MALANDA	2	0	0	0	0	0	2	2
5	Precious MWAPE	6	2	0	0	0	0	4	2
6	Grace PHIRI	36	1	8	0	3	24	0	7
9	Mercy CHIPASULA	12	1	4	1	2	4	0	6
10	Victoria MBALI	26	1	13	0	2	8	2	8
12	Natasha NKAKA	10	0	1	0	1	6	2	7
15	Sharon SIAKALOBA	1	0	0	0	0	0	1	0
17	Taonga MUBANGA	7	4	1	1	0	0	1	3
19	Lweendo HANONGO	17	4	3	0	0	0	10	7
21	Faith KAUNDA	2	0	0	0	2	0	0	0
7	KAJIYA	4	1	0	0	0	2	1	2
11	Masela SEKESEKE	3	0	1	0	0	2	0	2





# INDIVIDUAL DATA OUT OF POSSESSION

New Zealand 0 - 4 Zambia



Out of Possession

New Zealand



#	Player	Tackles Made / Won	Blocks	Interceptions	Pressing Direct	Pressing Indirect	Duels Won - Aerial	Duels Won - Physical	Possession Contests won	Clearances	Loose Ball Receptions	Pushing On	Pushing On into Pressing	Possession Regains	Possession Interrupted
1	Harriet MULLER	0 / 0	0	0	0	0	0	0	0	1	3	0	0	17	0
2	Charley MARCH	3 / 1	8	0	3	9	4	0	4	10	10	5	2	10	9
3	Holly ROBINS	2 / 1	3	1	11	8	3	0	3	18	8	19	10	6	15
6	Mikaela BANGALAN	7 / 1	2	0	5	12	2	0	3	9	7	15	2	4	8
7	Grace DUNCAN	3 / 1	2	0	4	12	0	0	0	4	4	6	2	2	4
8	Piper ONEILL	3 / 0	3	1	7	1	2	0	3	2	17	0	0	4	5
9	Katie PUGH	1 / 0	0	0	6	16	1	0	1	0	3	8	4	0	0
10	Pia VLOK	1 / 0	5	0	7	14	3	1	5	2	11	14	6	3	4
11	Laura BENNETT	1 / 0	0	0	7	12	1	0	1	1	4	6	3	0	0
16	Lane RIRINUI	8 / 1	2	2	11	6	0	0	1	9	5	2	1	8	9
19	Heidi DRAAI	1 / 1	0	1	4	6	1	0	1	2	4	4	2	2	2
12	Natalie YOUNG	0 / 0	1	0	1	2	0	0	0	0	4	1	1	1	0
13	Taylor VUJNOVICH	1 / 0	1	0	5	8	0	0	0	0	1	7	5	0	1
14	Sienna CANDY	3 / 1	0	1	2	9	0	0	1	0	5	2	0	2	1
17	Kya SOLOMON	2 / 1	1	0	3	3	1	0	1	0	2	2	1	3	1
20	Ariana VOSPER	2 / 0	1	1	3	10	0	0	0	4	2	10	5	3	3

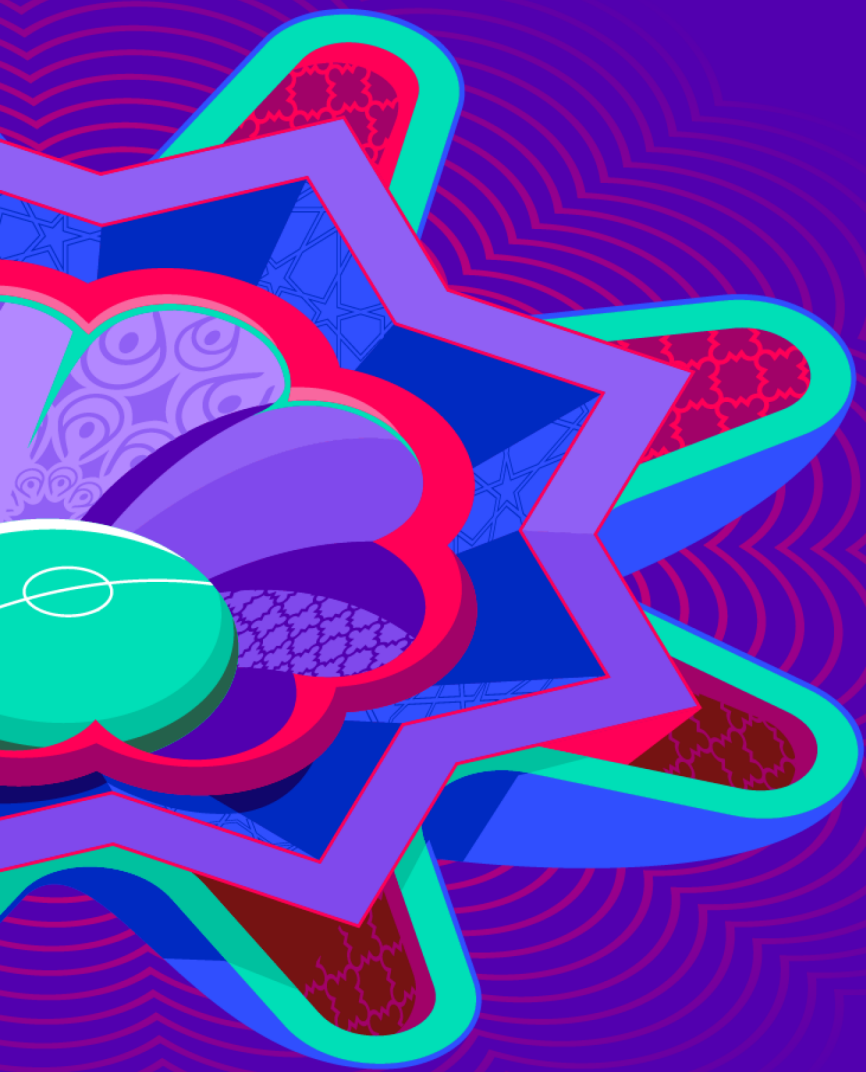


Out of Possession



#	Player	Tackles Made / Won	Blocks	Interceptions	Pressing Direct	Pressing Indirect	Duels Won - Aerial	Duels Won - Physical	Possession Contests won	Clearances	Loose Ball Receptions	Pushing On	Pushing On into Pressing	Possession Regains	Possession Interrupted
1	Mary NYANGU	0 / 0	0	0	0	0	0	0	0	0	3	0	0	4	0
4	Nana MALANDA	2 / 0	2	0	3	2	1	0	1	6	7	2	1	1	4
5	Precious MWAPE	5 / 1	5	0	5	1	1	0	1	7	5	2	0	4	7
6	Grace PHIRI	4 / 0	2	0	8	28	1	0	1	0	4	25	16	1	2
9	Mercy CHIPASULA	10 / 2	3	4	11	8	4	0	6	4	13	5	3	11	7
10	Victoria MBALI	3 / 2	2	1	7	23	4	0	6	0	11	14	10	9	1
12	Natasha NKAKA	11 / 4	4	1	6	4	2	0	4	5	13	7	6	12	3
15	Sharon SIAKALOBA	2 / 1	2	1	2	2	1	0	2	3	12	1	0	5	1
17	Taonga MUBANGA	13 / 4	6	1	11	20	0	0	1	11	18	19	10	12	12
19	Lweendo HANONGO	5 / 2	2	3	5	8	3	0	3	13	6	11	5	10	9
21	Faith KAUNDA	1 / 1	4	3	4	3	0	0	0	5	10	1	1	8	5
7	KAJIYA	1 / 1	1	0	1	0	0	0	0	0	0	0	0	2	0
11	Masela SEKESEKE	2 / 0	0	0	1	1	0	0	0	2	4	1	1	2	3





# INDIVIDUAL DATA PHYSICAL

**New Zealand 0 - 4 Zambia**



Physical Data



CC

#	Player	Total Distance (m)	Zone 1: 0-7 km/h (m)	Zone 2: 7-13 km/h (m)	Zone 3: 13-19 km/h (m)	Zone 4: 19-23 km/h (m)	Zone 5: 23+ km/h (m)	High Speed Runs (Zone 3)	Sprints (Zone 4 & 5)	Top Speed (km/h)
1	Harriet MULLER	4467.5	3482.9	794.8	179.9	6.4	3.5	17.0	1.0	24.5
2	Charley MARCH	10082.5	3693.5	4065.1	1660.5	466.0	197.4	172.0	38.0	29.6
3	Holly ROBINS	9633.5	3468.1	4076.4	1569.7	353.0	166.3	143.0	31.0	29.9
6	Mikaela BANGALAN	9795.2	3503.1	3464.9	2071.3	533.1	222.7	189.0	44.0	29.6
7	Grace DUNCAN	6005.5	2183.8	2198.0	1103.0	347.1	173.6	109.0	27.0	26.7
8	Piper ONEILL	8165.7	3077.9	3295.8	1512.2	205.6	74.2	121.0	21.0	32.9
9	Katie PUGH	5349.5	2078.9	1725.1	1092.8	298.4	154.2	113.0	25.0	27.4
10	Pia VLOK	10427.4	3892.4	3550.3	2452.6	325.0	207.2	209.0	30.0	31.4
11	Laura BENNETT	6426.3	2645.8	2157.3	1323.0	263.9	36.3	115.0	22.0	28.2
16	Lane RIRINUI	9289.7	3555.3	3585.8	1726.6	346.9	75.2	163.0	28.0	26.0
19	Heidi DRAAI	5509.5	2131.7	2097.6	956.0	187.3	136.9	96.0	15.0	30.7
12	Natalie YOUNG	2120.1	619.7	754.4	581.3	137.4	27.4	44.0	10.0	26.7
13	Taylor VUJNOVICH	4495.1	1809.0	1485.6	822.9	256.4	121.2	82.0	26.0	27.4
14	Sienna CANDY	4492.6	1514.0	1707.4	1127.6	132.4	11.2	91.0	14.0	25.4
17	Kya SOLOMON	3472.6	923.2	1450.8	856.4	166.5	75.6	63.0	13.0	28.3
20	Ariana VOSPER	4422.3	1312.2	1568.5	1115.7	279.8	146.2	99.0	22.0	27.0



Physical Data



CC

#	Player	Total Distance (m)	Zone 1: 0-7 km/h (m)	Zone 2: 7-13 km/h (m)	Zone 3: 13-19 km/h (m)	Zone 4: 19-23 km/h (m)	Zone 5: 23+ km/h (m)	High Speed Runs (Zone 3)	Sprints (Zone 4 & 5)	Top Speed (km/h)
1	Mary NYANGU	4396.3	3451.6	789.7	142.4	12.6	0	15.0	0	23.2
4	Nana MALANDA	7526.7	3741.6	2641.3	844.2	199.3	100.4	86.0	17.0	28.8
5	Precious MWAPE	7585.1	3819.6	2664.2	828.9	213.1	59.3	90.0	17.0	28.8
6	Grace PHIRI	9689.8	3731.1	3251.4	1770.0	561.2	376.1	166.0	49.0	28.8
9	Mercy CHIPASULA	9272.9	3848.7	3210.9	1693.1	370.9	149.3	149.0	36.0	28.5
10	Victoria MBALI	10651.1	3492.2	3926.7	2329.0	626.6	276.7	219.0	51.0	33.8
12	Natasha NKAKA	8497.4	3261.2	3184.4	1461.4	387.5	202.9	137.0	33.0	29.0
15	Sharon SIAKALOBA	7617.4	2349.0	3106.6	1562.7	366.4	232.6	144.0	33.0	28.2
17	Taonga MUBANGA	9681.5	3759.9	3594.5	1963.6	318.9	44.6	172.0	29.0	27.4
19	Lweendo HANONGO	9878.3	3733.7	3258.2	2083.7	633.5	169.2	186.0	47.0	28.0
21	Faith KAUNDA	9275.4	4031.2	2919.8	1529.0	515.0	280.4	151.0	39.0	29.9
7	KAJIYA	1621.9	360.8	566.9	557.4	122.7	14.1	38.0	8.0	24.3
11	Masela SEKESEKE	3666.2	1228.3	1207.0	717.8	255.2	257.9	66.0	25.0	34.2



